



Braiswick Primary School, Colchester

10 Year Plan

Meeting the demand for school places in Essex

2019-2028

For more information go to
www.essex.gov.uk/schoolorganisation

Contents

1. Executive Summary	2
1.1 Purpose and scope	2
1.2 School Organisation	2
1.3 Areas of growth and additional places planned	3
1.4 Funding and Delivery	5
2. Introduction – Planning for school places	6
2.1 Statutory duty and available funding	6
2.2 Forecasting methodology	6
2.3 Academies and Free Schools	8
2.4 Factors that influence planning for school places	8
2.5 New Housing, S106 and Community Infrastructure Levy	9
3. Forecasts and Plans	12
3.1 Mid Essex	13
3.1.1 Braintree	14
3.1.2 Chelmsford	21
3.1.3 Maldon	28
3.2 North East Essex	32
3.2.1 Colchester	33
3.2.2 Tendring	39
3.3 South Essex	44
3.3.1 Basildon	45
3.3.2 Brentwood	49
3.3.3 Castle Point	52
3.3.4 Rochford	55
3.4 West Essex	59
3.4.1 Epping Forest	60
3.4.2 Harlow	66
3.4.3 Uttlesford	69

1. Executive Summary

1.1 Purpose and scope

The purpose of the 10 year plan is to set out:

- The demand for school places in the next 10 years (from academic year 19/20 to academic year 28/29) for each of the districts and the authority's plans to address this demand.
- Solutions already in the pipeline that will meet the forecast demand for school places.
- Potential options for addressing medium to long term forecast demand for school places.
- The context in which the Essex School Organisation Service operates to ensure there are sufficient school places.

This plan is based on forecasts produced at the end of the summer term of the 2017/18 academic year. It is updated annually, on a 10-year rolling basis, to take into account new forecasts, the capital budget setting cycle, and potential options and solutions that have been identified since the previous version.

The scope of the 10 Year Plan is mainstream education provision in Essex. SEND, Early years, 6th form and other forms of education provision are not within the scope of this plan, but are considered when deciding on solutions, to ensure efficient and sustainable choices are made for capital investment.

1.2 School Organisation

For the purposes of planning for school places, ECC organises the schools in quadrants, districts and planning groups. The quadrants and districts are listed on the following table.

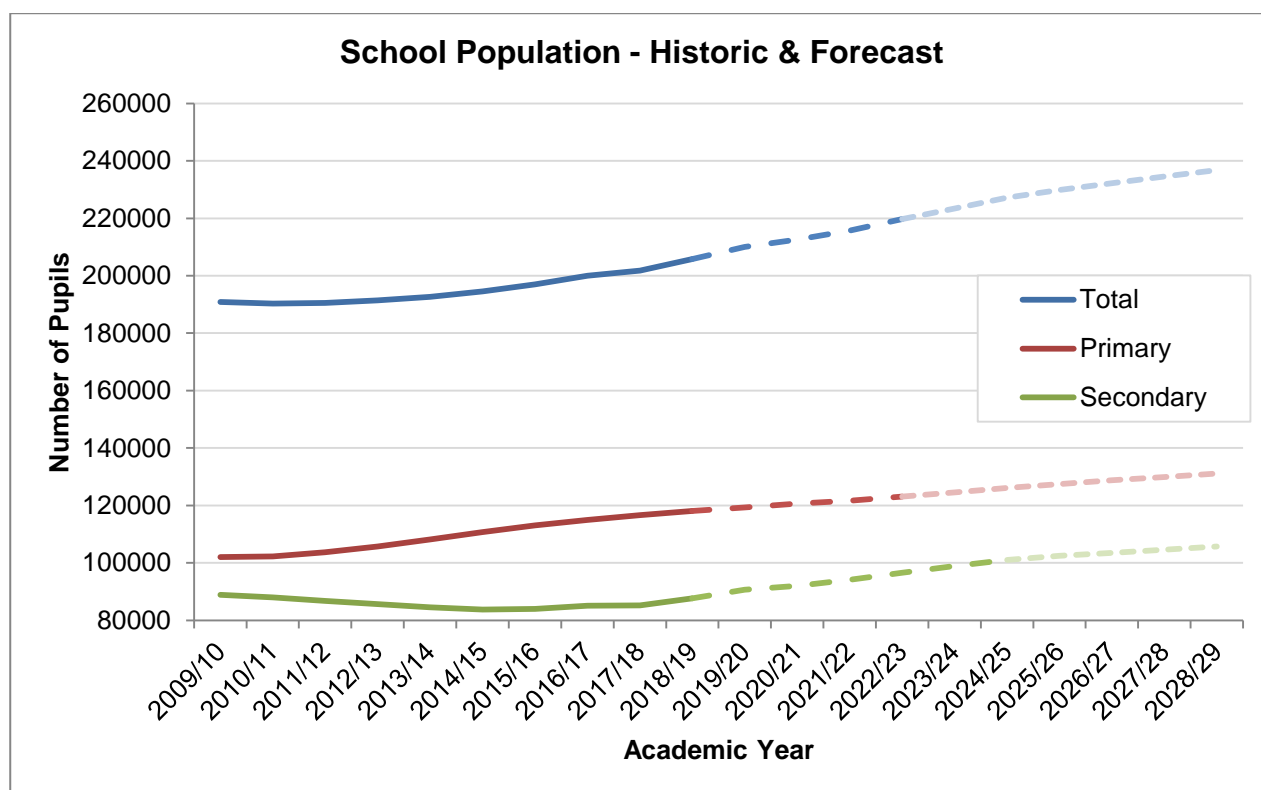
Mid Braintree, Chelmsford, Maldon	North East Colchester, Tendring
South Basildon, Brentwood, Castle Point, Rochford	West Epping Forest, Harlow, Uttlesford

The Planning Group forecasts are set out in detail in section three of this document. Planning groups provide the basis for the annual DfE School Capacity (SCAP) return that

determines the level of grant funding the Council is allocated. They are groups of schools, defined by geography and admissions patterns, wherein a sufficiency of places across the group will generally ensure every child can access a local school place (even if some schools are oversubscribed).

Essex School Organisation Service comprises a team of 10 officers who manage the school organisation and place planning activity of the local authority. Officers from the team have assigned quadrants and will liaise with schools individually and collectively to discuss current demand for places, future demand for places and any projects that need to be completed to ensure there are sufficient school places. Officers from the team also engage with planning authorities, local members, residents and communities, faith groups, developers and all tiers of local government. In this way the team develops this 10 Year Plan collaboratively with schools and other stakeholders.

1.3 Areas of growth and additional places planned



Solid Line = Historic data

Dashed Line = Forecast data

Faded Dashed Line = Forecast data without actual birth information

The significant increase in demand for school places in Essex is predicted to continue. There are currently 450 primary, Infant and Junior and 77 secondary schools in Essex (September 2017), including a University Technical College. The total primary capacity last academic year was 122,100 places, with 115,217 children on roll (January 2018 census), and the total secondary capacity was 95,118 places with 84,672 children on roll (January 2018 census). This is an increase of 2,197 and 442 pupils since the same points in 2016 respectively. The number of pupils attending Good or Outstanding schools in Essex is increasing. Although the above figures point to a surplus in terms of capacity, in reality this is not the case as the available capacity is not all in the right areas or year groups.

Based on the forecast data, over the next 10 years the Authority needs to plan to deliver an additional 8,757 additional primary places, and 12,410 secondary places.

The table below shows the estimated Reception and Year 7 places that need to be delivered over the life of this plan.

		Additional Places Required Over the Plan Period			
		Primary		Secondary	
		Reception	Total	Year 7	Total
Mid	Braintree	127	889	154	770
	Chelmsford	255	1785	517	2585
	Maldon	76	532	65	325
NE	Colchester	126	882	486	2430
	Tendring	201	1407	223	1115
South	Basildon	32	170	0	0
	Brentwood	48	336	42	210
	Castle Point	32	224	47	235
	Rochford	45	315	89	445
West	Epping Forest	92	644	388	1940
	Harlow	124	868	315	1575
	Uttlesford	93	651	156	780
Total		1251	8757	2482	12410

1.4 Funding and delivery

ECC uses a mixture of funding sources to finance additional school places. Funding sources available include basic need grant from central government, section 106 and CIL contributions from developers, Free School Education and Skills Funding Agency (ESFA) funding, and contributions from schools. New school places must be funded through these means, as ECC has no other grants/ funds dedicated to providing school places.

The Capital Programme which includes the planned spending on education infrastructure is published annually and can be found via this link:

<https://www.essex.gov.uk/Your-Council/Council-Spending/Pages/Council%20Spending.aspx>

Essex County Council has a professional in house Infrastructure Delivery Team. They assist in the development of school expansion and new school solutions by undertaking viability studies, and then leading on the delivery of the capital projects through to completion. Through the work of this team, school building projects are delivered to a high standard and at good value, ensuring the best outcome from the investment of public funds.

2. Introduction – Planning for school places

2.1 Statutory duty and available funding

Essex County Council has a statutory duty to ensure there are sufficient school places for children between 4 and 16 years old. Fulfilling this duty, and aligning strategic planning for school places with other service requirements, supports all of the strategic aims of the Essex Organisation Strategy 2017-2021:

- Enable inclusive economic growth.
- Help people get the best start and age well.
- Help create great places to grow up, live and work.
- Transform the council to achieve more with less.

To discharge this responsibility, school organisation changes are commissioned in response to forecast data that predicts the demand for school places. These school organisation changes include building new schools, expansion of existing schools, closure of schools, or reducing the intake at a school.

As stated in section 1.4 above, there are a number of funding sources for delivering school building projects, all of which need to be coordinated through the Council's Capital Programme. A long term plan for ensuring sufficient school places is required to enable capital (and revenue) financing to be secured and then spent effectively.

The 10 Year Plan undergoes an annual revision each autumn, following submission of the annual School Capacity Return (SCAP Return) to the DfE, which is completed by all local authorities. The SCAP Return is the basis on which basic need grants are calculated. Endorsement for the plan is sought from the Council's Investment Board upon each revision, to enable a dynamic response to changes in demand for school places, thereby ensuring that every child in Essex has an appropriate place to go to school.

2.2 Forecasting methodology

Primary School forecasts are prepared using information on places offered for September 2018, historical trends in admissions, current numbers on roll, and current GP registrations in schools' admissions areas. Numbers on roll are taken from the School Census pupil counts each January. The number of pre-school age children in each relevant age group living in an area is obtained from GP registration figures collected by the NHS. The

number of children that were due to reach school age living in a school's priority admissions area, compared to the number that actually joined the relevant school in Reception is known as an 'admissions factor'. An average admissions factor taken over the past three years is then applied to current GP registration numbers for the 0 to 3 year olds in the admissions area to predict future intakes to the Reception year. For year groups beyond the horizon for which GP registration data is available, an average of the last three potential cohort sizes is taken and then Office for Nation Statistics birth rate trends are applied, to this average level, to predict figures for the latter half of the ten years.

For schools with sixth forms, two further admissions factors are calculated using historical information comparing the number of pupils in Year 11 staying on to Year 12 and likewise from Year 12 to Year 13. Average sixth form admission factors are then applied to pupil numbers in Year 11 or Year 12 to forecast future sixth form numbers.

The number of additional pupils likely to be generated by new homes being built in the area is added to the forecasts. A detailed database of housing developments planned within schools' catchment areas is maintained by Essex County Council. It records the estimated mix of houses and flats in a development along with the number of each type of dwelling that may be completed each year. This information is used in school forecasts once the development in question either has planning permission or is endorsed by a Local Planning Authority by being included in a 'submission draft' (regulation 19) Local Plan.

The likely number of pupils that will move into a development and require an additional place at the local school is calculated using factors for houses and flats. One bedroomed units and certain other types of dwellings that are unlikely to house children are discounted from the calculation. The factors currently used are 0.3 additional primary school pupils per new house and 0.15 additional pupils per new flat. For secondary pupils the factors are 0.2 additional pupils per new house and 0.1 additional pupils per new flat. Finally, the gradual buildup of pupils from new housing over a number of years is modelled through additional factors that produce a staggered effect rather than the full pupil product being added in from the first year new homes are occupied.

Obtaining precise housing figures is a significant challenge due to commercial confidentiality. By including such data it must also be recognised that market conditions, and thereby delivery rates, change. Despite the potential for forecasts to be skewed by inaccurate housing data, it is important that the Ten Year Plan anticipates the potential increase in households in an area if Essex County Council is to ensure they meet their statutory duty to facilitate sufficient school places.

To meet the need for new housing, a number of Local Planning Authorities are considering establishing new Garden Communities. These will be significant new settlements that will need to be self-sustaining in terms of infrastructure. The precise scale of plans and timescales are still emerging and thereby, in some cases, our current forecasts are yet to pick up this growth. New schools will need to be planned and future iterations of this document will consider the specific needs of these areas.

2.3 Academies and Free Schools

Currently there are 236 academies in Essex. The council has a strong process in place to support the academy conversion process, which is primarily a legal function.

Free Schools were typically a method for groups of parents or other parties to set up a school that would provide diversity in the school system, often in response to existing low standards in the local area. Over recent years the Free Schools programme has changed. Not only are all new schools proposed by local authorities considered Free Schools (this has no practical impact on opening new schools), but Free Schools are now being proposed by multi-academy trusts and other groups, in response to forecast demand.

The Free Schools Programme provides an opportunity for ECC to build on a strong collaborative working relationship with the Regional Schools Commissioner and multi-academy trusts working in Essex. This will enable ECC to continue to ensure sufficient school places (particularly where expansion of academies is required to provide the correct solution), even if/ when no schools are under its control.

2.4 Factors that influence planning for school places

There are a number of factors that influence strategic thinking and basic need solutions outlined in this 10 year plan. These are kept under regular review and changes to the plan will be reflected annually as part of a rolling programme. The factors include:

- Fluctuation in forecast pupil numbers.
- Local Development Plans (many of which are currently out to consultation).
- Phasing and timing of actual housing developments and the timing of availability of sites for new school provision (services, access, infrastructure).
- Changing patterns of growth in mid-year migration.
- Schools and Academies adjusting their Published Admission Numbers or capacities.

- Cross border migration patterns and delivery solutions.
- Changes to admissions arrangements.
- Project viability.
- Home to school transport.

The Home to School Transport Budget comprises an un-ring-fenced grant and a contribution from Dedicated Schools Grant. This budget is under constant pressure. In considering the strategic solution for the supply of school places in an area the potential transport implications are a key factor in determining the location of potential solutions when assessed against the areas of demand. Where solutions do not address a local need and transport has to be provided the Local Authority would be faced with meeting the cost of the transport in perpetuity. This is an important element in considering the cost benefit of a solution.

2.5 New Housing, Section 106, and Community Infrastructure Levy

The twelve borough/ district/ city councils in Essex, that act as local planning authorities, are required to draw up Local Development Plans. Under the terms of the National Planning Policy Framework (NPPF), these Local Plans must identify sufficient deliverable housing sites to meet their objectively assessed housing need for at least the first five years of the Plan period. In addition they are required to identify specific developable sites for new housing for years 6-10, to enable the five year supply of housing land to be topped up. Essex County Council comments on the likely impact on school places of new housing allocations in Local Plans to help local planning authorities understand how sustainable their plans are in school place planning terms and, importantly, where they need to allocate land for new school place provision.

A number of the local planning authorities do not have an up to date adopted Local Plan. This has resulted in a number of housing developers submitting speculative planning applications for sites that may not be sustainable in terms of school place provision. In the absence of a five year land supply, the applicant has a strong chance of a successful appeal if the planning application is refused.

This can result in housing developments being granted planning permission in areas where there are insufficient surplus school places to accommodate the pupil product from the development and the development is of insufficient scale to generate a developer contribution that is sufficient to fund a new school or the expansion of an existing school. This can be particularly problematic in those areas where there isn't the site capacity to expand an existing school. Since these sites are not known in advance, they also present

the problem of affording insufficient time to identify, plan and build the appropriate education infrastructure to meet the needs of the increased population. ECC seeks to limit this impact through proactive collaboration with the local planning authorities to aid them in development of their housing plans.

When the number of pupils generated by new housing is greater than the surplus capacity available in permanent accommodation in schools that might accommodate pupils from the new development, a contribution can be sought from the developer via a Section 106 agreement. This contribution can be in the form of additional land and/ or a financial contribution for new accommodation. It is up to local planning authorities to decide whether to support such requests and they are under a duty to balance all the requests, made by different infrastructure providers, against the viability of the development. In April 2015, the Community Infrastructure Levy (CIL) regulations were brought into force. These regulations restrict the number of s106 planning obligations that a council can consider to five per infrastructure project. Full details of how developer contributions are sought and calculated can be found in Essex County Council's Developers' Guide to Infrastructure Contributions.

The Community Infrastructure Levy allows a local planning authority to introduce a fixed charge on development to fund infrastructure that is not being delivered through s106. There is currently no legal requirement for councils to introduce CIL. If councils choose to set a CIL they must set out the level of development planned in their area and the cost of the infrastructure required to support it. They must also consult the public and set out in a list the type of infrastructure or individual projects they will use the CIL to fund. This list may include the provision of additional school places but must not include any projects intended for delivery through s106 agreements.

Of the 12 district councils in Essex only Chelmsford City Council has, to date, adopted CIL. Other councils are considering implementing CILs but it is not thought that all 12 Essex local planning authorities will adopt a charge. Councils that do not to adopt a CIL will need to rely upon Section 106 agreements from larger sites to fund the infrastructure projects required to support new development in their areas.

It is anticipated that even those district councils that adopt CIL will continue to use a mixture of CIL and Section 106 agreements to fund infrastructure projects with section 106 agreements being used for large scale developments and CIL being used for smaller developments. With CIL, schools must compete with other infrastructure providers, including the district councils themselves, for the available funding. Whether CIL will provide the same level of funding as S106 agreements is a matter of conjecture. However, it is likely, given the competing demands on a single CIL pot, that funding may not become

available to ECC in the same volume and as quickly as has been the case with the funding from Section 106 agreements.

Phasing and timelines for potential new housing developments are being closely monitored and viability reports have been commissioned for the delivery of a number of new schools associated with new housing. Plans are being progressed with developers to ensure that new provision can be provided at the earliest opportunity following commencement of housing development where there is insufficient capacity within existing school provision to accommodate pupils from the initial phases.

Delivery of the new provision will be dependent on confirmation of timing and phasing of housing by the developer, planning permissions and the timescale for delivery of necessary infrastructure to serve the new school provision, including services and access to the new school sites.

3. Forecasts and plans

The following sections include the school place forecasts at a planning group level, grouped into districts and quadrants. For each district the primary planning groups are shown first, followed by secondary planning groups. Below is an example:

1

1. Witham

2

Current PAN: 377
Current Capacity: 2664

3

Reception Place Forecast

Year	19/20	20/21	21/22	22/23	23/24	24/25	25/26	26/27	27/28	28/29
+/-	50	25	31	20	11	0	-9	-18	-26	-36
Chipping Hill Primary, Elm Hall Primary, Holy Family Catholic Primary, Howbridge CofE Junior, Howbridge Infant, Powers Hall Academy, Powers Hall Infant, Rivenhall CofE Primary, Templars Academy										

4

5

Capacity Forecast

Year	+/-
19/20	301
20/21	207
21/22	144
22/23	84
23/24	20

6

Projects Pipeline

School	Year	Description	Places
New Primary School	2024	1 form entry, able to expand to 2 form entry	30/210

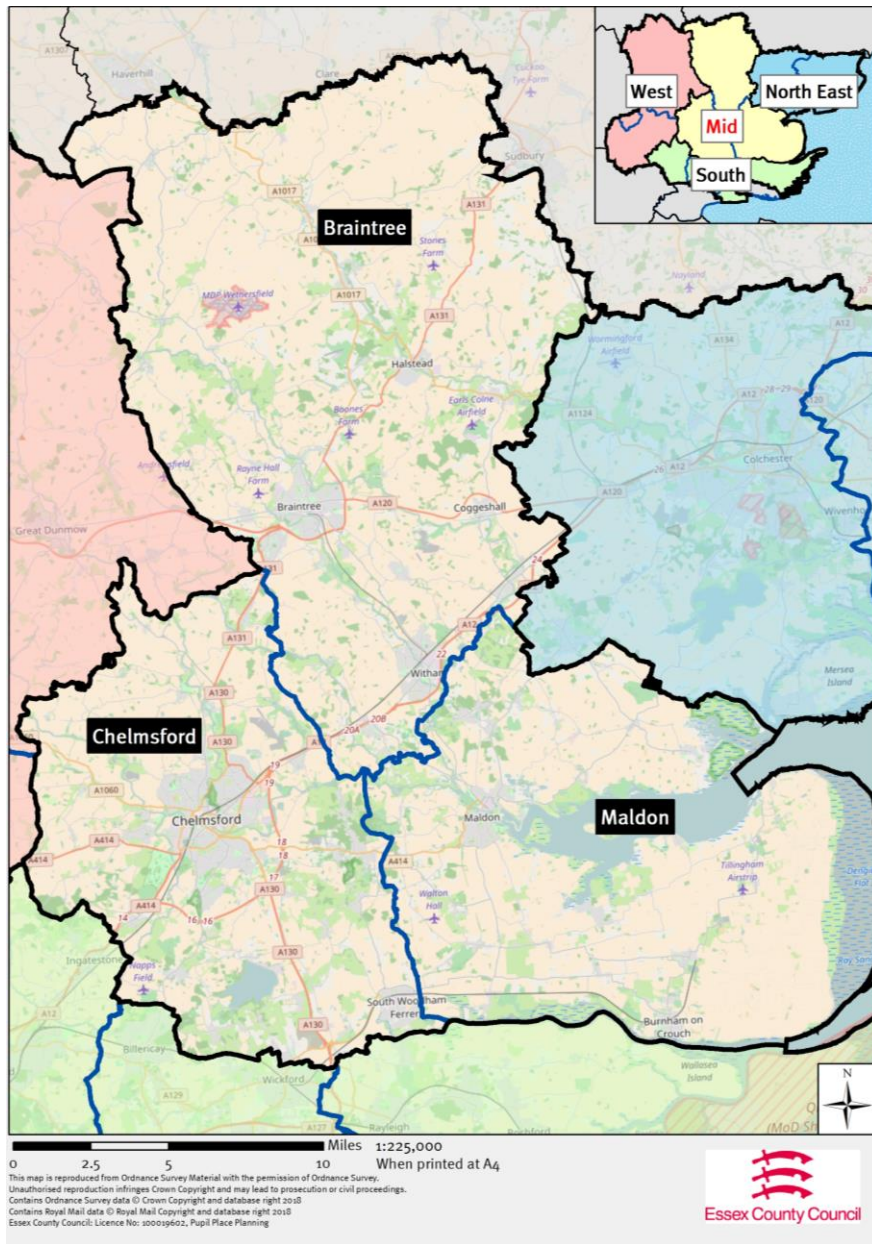
7

There are significant housing developments to the north and south of Witham. The Lodge Farm development (to the south) includes a site for a new primary school.

8

1. Name – Each planning group has a name, describing a general geographical area.
2. Current – PAN (published admission number for September 2019) is the number of spaces available at Reception or Year 7 in the planning group, capacity is the entire physical capacity of the schools available in the planning group.
3. Forecast – This headline forecast will be for either Reception places (primary) or Year 7 places (secondary). It shows the surplus or deficit of places forecast for the next 10 years, having included the demand anticipated from new housing.
4. Schools – A full list of the schools included in the planning group.
5. Capacity – Rather than focusing on just Reception/ Year 7, this forecast is based on the entire number on roll and capacity of the schools. This forecast can indicate where additional school spaces are required in response to high levels of new housing or inward migration, even when the headline forecast doesn't indicate a need.
6. Projects Pipeline – These are the projects the council is proposing, to mitigate any forecast need for additional school places. A school will be named where the project is confirmed, along with the year of implantation and a brief description of the project.
7. Places – In the example (30/210), 30 refers to the number of Reception places created, and 210 refers to the total number of places created across all year groups.
8. If appropriate, additional information and context may be provided.

3.1 Mid Essex



For the purposes of school organisation and place planning, mid Essex includes the districts of Braintree and Maldon, as well as Chelmsford City.

Maldon has an adopted local plan in force. Braintree and Chelmsford have both submitted their local plans for inspection, with Chelmsford expected to have an adopted plan in force in the summer of 2019.

3.1.1 Braintree

Primary School Planning Groups

1. Witham

Current PAN: 377
Current Capacity: 2664

Reception Place Forecast

Year	19/20	20/21	21/22	22/23	23/24	24/25	25/26	26/27	27/28	28/29
+/-	46	0	19	5	-3	-12	-19	-27	-33	-38
Chipping Hill Primary, Elm Hall Primary, Holy Family Catholic Primary, Howbridge CofE Junior, Howbridge Infant, Powers Hall Academy, Powers Hall Infant, Rivenhall CofE Primary, Templars Academy										

Capacity Forecast

Year	+/-
19/20	300
20/21	207
21/22	144
22/23	83
23/24	39

Projects Pipeline

School	Year	Description	Places
New Primary School	23/24	1 form entry, able to expand to 2 form entry	30/210

There are significant housing developments to the north and south of Witham. The Lodge Farm development (to the south) includes a site for a new primary school.

2. Kelvedon/Feering

Current PAN: 130
Current Capacity: 910

Reception Place Forecast

Year	19/20	20/21	21/22	22/23	23/24	24/25	25/26	26/27	27/28	28/29
+/-	14	36	34	24	18	12	-1	-11	-21	-32
Feering CE Primary, Kelvedon St Mary's CE Primary Academy, St Peter's CE Primary										

Capacity Forecast

Year	+/-
19/20	72
20/21	98
21/22	121
22/23	104
23/24	85

Projects Pipeline

School	Year	Description	Places
no projects in pipeline			

The significant increase in demand for Reception places seen from 25/26 onwards is related to the new garden settlement "West Tey", which will require new primary school provision at the appropriate time.

3. Halstead/Gosfield

Current PAN: 140
Current Capacity: 1076

Reception Place Forecast

Year	19/20	20/21	21/22	22/23	23/24	24/25	25/26	26/27	27/28	28/29
+/-	31	12	27	11	4	1	-1	-2	-3	-3
Gosfield Primary, Holy Trinity CE Primary, Richard de Clare Primary, St Andrew's CE Primary										

Capacity Forecast

Year	+/-
19/20	124
20/21	116
21/22	117
22/23	103
23/24	83

Projects Pipeline

School	Year	Description	Places
no projects in pipeline			

4. Hedingham

Current PAN: 75
Current Capacity: 528

Reception Place Forecast

Year	19/20	20/21	21/22	22/23	23/24	24/25	25/26	26/27	27/28	28/29
+/-	-6	5	-3	3	5	4	4	4	4	4
de Vere Primary, St Giles CE Primary, St Peter's CE Primary										

Capacity Forecast

Year	+/-
19/20	44
20/21	28
21/22	20
22/23	11
23/24	7

Projects Pipeline

School	Year	Description	Places
tbc	19/20	Bulge class	10/10

Demand for places at these schools often comes from outside the local area. Underlying data will be monitored to see whether bulge classes are actually required in 19/20 and potentially 21/22 to meet local demand.

5. Finchingfield / Bardfield / Wethersfield

Current PAN: 48
Current Capacity: 333

Reception Place Forecast

Year	19/20	20/21	21/22	22/23	23/24	24/25	25/26	26/27	27/28	28/29
+/-	10	20	8	3	-3	-12	-22	-33	-43	-54
Finchingfield CE Primary, Great Bardfield Primary, Wethersfield CE Primary										

Capacity Forecast

Year	+/-
19/20	71
20/21	69
21/22	66
22/23	30
23/24	-16

Projects Pipeline

School	Year	Description	Places
tbc	23/24	small expansion	tbc
New Primary School	26/27	2 form entry	60/420

The required new primary school is associated with the new garden settlement "West of Braintree".

6. Braintree town and surrounds

Current PAN: 748
Current Capacity: 5305

Reception Place Forecast

Year	19/20	20/21	21/22	22/23	23/24	24/25	25/26	26/27	27/28	28/29
+/-	57	21	83	31	13	-2	-16	-31	-45	-59
Beckers Green Primary, Bocking Church Street Primary, Great Bradfords Infant, Great Bradfords Junior, John Bunyan Primary, John Ray Infant, John Ray Junior, Lyons Hall Primary, Notley Green Primary, Rayne Primary, Shalford Primary, St Francis Catholic Primary, St Michael's CE Primary, Stisted CE Primary, White Court Primary, White Notley CE Primary										

Capacity Forecast

Year	+/-
19/20	176
20/21	164
21/22	285
22/23	243
23/24	171

Projects Pipeline

School	Year	Description	Places
New Primary School	24/25	1 form entry, able to expand to 2 form entry	30/210

A site for a new primary school has been secured on the Panfield Lane development through a S106 agreement.

7. Earls Colne / Colne Engaine

Current PAN: 76
Current Capacity: 491

Reception Place Forecast

Year	19/20	20/21	21/22	22/23	23/24	24/25	25/26	26/27	27/28	28/29
+/-	10	-7	6	4	3	2	2	2	2	2
Colne Engaine CE Primary, Earls Colne Primary										

Capacity Forecast

Year	+/-
19/20	16
20/21	-24
21/22	-30
22/23	-36
23/24	-30

Projects Pipeline

School	Year	Description	Places
Earls Colne	19/20	Small expansion	0/30
tbc	20/21	Bulge class	10/10

Earls Colne requires some expansion work to provide the school with the correct number of classrooms to continue to admit up to its PAN.

8. Braintree rural north

Current PAN: 122
Current Capacity: 858

Reception Place Forecast

Year	19/20	20/21	21/22	22/23	23/24	24/25	25/26	26/27	27/28	28/29
+/-	38	11	21	28	26	25	25	25	25	25
Belchamp St Paul's CE Primary, Bulmer St Andrew's CE Primary, Ridgewell CE Primary, St Andrew's CE Primary, St John The Baptist CE Primary, St Margaret's CE Primary, Stanley Drapkin Primary										

Capacity Forecast

Year	+/-
19/20	189
20/21	173
21/22	170
22/23	172
23/24	169

Projects Pipeline

School	Year	Description	Places
no projects in pipeline			

9. Cressing / Silver End

Current PAN: 90
Current Capacity: 618

Reception Place Forecast

Year	19/20	20/21	21/22	22/23	23/24	24/25	25/26	26/27	27/28	28/29
+/-	35	30	12	16	9	5	3	2	1	0
Cressing Primary, Silver End Primary										

Capacity Forecast

Year	+/-
19/20	138
20/21	116
21/22	93
22/23	75
23/24	31

Projects Pipeline

School	Year	Description	Places
no projects in pipeline			

10. Hatfield Peverel / Terling

Current PAN: 75
Current Capacity: 525

Reception Place Forecast

Year	19/20	20/21	21/22	22/23	23/24	24/25	25/26	26/27	27/28	28/29
+/-	10	13	-2	5	1	-1	-3	-4	-5	-5
Hatfield Peverel Infant, Hatfield Peverel St Andrew's Junior, Terling CE Primary										

Capacity Forecast

Year	+/-
19/20	59
20/21	66
21/22	56
22/23	43
23/24	13

Projects Pipeline

School	Year	Description	Places
no projects in pipeline			

Secondary School Planning Groups

1. Braintree

Current PAN: 670
Current Capacity: 3693

Year 7 Place Forecast

Year	19/20	20/21	21/22	22/23	23/24	24/25	25/26	26/27	27/28	28/29
+/-	74	78	34	74	63	47	55	58	23	46
Alec Hunter Academy, Notley High School, Tabor Academy										

Capacity Forecast

Year	+/-
19/20	661
20/21	574
21/22	458
22/23	356
23/24	249

Projects Pipeline

School	Year	Description	Places
Alec Hunter Academy	19/20	Small expansion – S106 funding resolving deficit of accommodation.	0/58

2. Witham

Current PAN: 360
Current Capacity: 2200

Year 7 Place Forecast

Year	19/20	20/21	21/22	22/23	23/24	24/25	25/26	26/27	27/28	28/29
+/-	24	7	-4	-33	-32	-1	-30	-27	-69	-52
Maltings Academy, New Rickstones Academy										

Capacity Forecast

Year	+/-
19/20	498
20/21	413
21/22	314
22/23	163
23/24	25

Projects Pipeline

School	Year	Description	Places
New Rickstones Academy	21/22	1 form entry expansion	30/150

3. Halstead / Heddingham / Coggeshall

Current PAN: 536
Current Capacity: 3065

Year 7 Place Forecast

Year	19/20	20/21	21/22	22/23	23/24	24/25	25/26	26/27	27/28	28/29
+/-	-22	-6	-16	-49	-12	-106	14	-38	-50	-22
Heddingham School, Honywood Community Science School, The Ramsey Academy										

Capacity Forecast

Year	+/-
19/20	285
20/21	233
21/22	163
22/23	51
23/24	-4

Projects Pipeline

School	Year	Description	Places
Ramsey Academy	19/20	PAN increase to 150 from 130	20/0
tbc	22/23	Bulge Class	30/30

Increased demand for secondary school places from 24/25 onwards is primarily related to the new garden settlement “West Tey”, which will require a new secondary school at the appropriate time.

3.1.2 Chelmsford

Primary School Planning Groups

1a. Broomfield / Leighs / Waltham / Ford End

Current PAN: 137
Current Capacity: 1023

Reception Place Forecast

Year	19/20	20/21	21/22	22/23	23/24	24/25	25/26	26/27	27/28	28/29
+/-	-4	-20	-26	-35	-46	-57	-70	-84	-95	-107
Ford End CE Primary, Great Leighs Primary, Great Waltham CE Primary, Little Waltham CE Primary, Broomfield Primary										

Capacity Forecast

Year	+/-
19/20	11
20/21	-42
21/22	-113
22/23	-194
23/24	-245

Projects Pipeline

School	Year	Description	Places
Broomfield Primary	19/20	½ form entry expansion	15/105
tbc	21/22	Up to 1 form entry of additional primary capacity	30/210

The increase in demand forecast from 22/23 onwards is linked to the emerging Local Plan, with associated sites for new primary schools.

2. Rettendon / West Hanningfield

Current PAN: 35
Current Capacity: 244

Reception Place Forecast

Year	19/20	20/21	21/22	22/23	23/24	24/25	25/26	26/27	27/28	28/29
+/-	0	0	0	-1	-1	-1	-1	-1	-1	-1
Rettendon Primary, St Peter's CE Primary										

Capacity Forecast

Year	+/-
19/20	4
20/21	2
21/22	1
22/23	-7
23/24	-9

Projects Pipeline

School	Year	Description	Places
no projects in pipeline			

3. Springfield

Current PAN: 510
Current Capacity: 3764

Reception Place Forecast

Year	19/20	20/21	21/22	22/23	23/24	24/25	25/26	26/27	27/28	28/29
+/-	-5	23	24	-8	-27	-44	-61	-78	-96	-114
Barnes Farm Infant, Barnes Farm Junior, Beaulieu Park School, The Bishops CE & Catholic Primary, The Cathedral CE Primary, Chancellor Park Primary, Perryfields Infant, Perryfields Junior, Springfield Primary, Trinity Road Primary, Tyrrells Primary										

Capacity Forecast

Year	+/-
19/20	337
20/21	306
21/22	244
22/23	187
23/24	74

Projects Pipeline

School	Year	Description	Places
New Primary School	23/24	2 form entry, able to expand to 3 form entry	60/420

4. Baddow / Moulsham / Galleywood

Current PAN: 570
Current Capacity: 4123

Reception Place Forecast

Year	19/20	20/21	21/22	22/23	23/24	24/25	25/26	26/27	27/28	28/29
+/-	14	-56	13	-23	-28	-33	-34	-37	-39	-40
Baddow Hall Infant, Baddow Hall Junior, Beehive Lane Primary, Galleywood Infant, Larkrise Primary, Meadgate Primary, Mildmay Infant, Mildmay Junior, Moulsham Infant, Moulsham Junior, Oaklands Infant, Our Lady Immaculate Catholic Primary, St Michael's CE Junior, Westlands Primary										

Capacity Forecast

Year	+/-
19/20	132
20/21	41
21/22	21
22/23	12
23/24	-5

Projects Pipeline

School	Year	Description	Places
tbc	20/21	Bulge classes	60/30
Moulsham Infant	22/23	Increase PAN to 120 in existing accomodation	30/0

5a. Melbourne

Current PAN: 270
Current Capacity: 1876

Reception Place Forecast

Year	19/20	20/21	21/22	22/23	23/24	24/25	25/26	26/27	27/28	28/29
+/-	-10	0	-36	-18	-32	-39	-46	-57	-68	-72
Kings Road Primary, Lawford Mead Primary, Maltese Road Primary, Newlands Spring Primary, Parkwood Primary, St Pius X Catholic Primary										

Capacity Forecast

Year	+/-
19/20	25
20/21	-6
21/22	-84
22/23	-135
23/24	-183

Projects Pipeline

School	Year	Description	Places
tbc	21/22	1 form entry expansion	30/210
New Primary School	24/25	1 form entry, able to expand to 2 form entry	30/210

A new primary school is planned as part of a housing allocation west of Chelmsford.

6. Danbury / Bicknacre / East Hanningfield

Current PAN: 114
Current Capacity: 819

Reception Place Forecast

Year	19/20	20/21	21/22	22/23	23/24	24/25	25/26	26/27	27/28	28/29
+/-	7	10	4	4	1	0	-1	-2	-3	-3
Danbury Park Primary, East Hanningfield CE Primary, Priory Primary, St John's CE Primary										

Capacity Forecast

Year	+/-
19/20	40
20/21	36
21/22	42
22/23	45
23/24	52

Projects Pipeline

School	Year	Description	Places
no projects in pipeline			

7. South Woodham

Current PAN: 239
Current Capacity: 1696

Reception Place Forecast

Year	19/20	20/21	21/22	22/23	23/24	24/25	25/26	26/27	27/28	28/29
+/-	28	35	32	28	23	18	13	6	1	-3
Collingwood Primary, Elmwood Primary, St Joseph's Catholic Primary, St Mary's CE Primary, Trinity St Mary's CE Primary, Woodville Primary										

Capacity Forecast

Year	+/-
19/20	190
20/21	192
21/22	230
22/23	210
23/24	201

Projects Pipeline

School	Year	Description	Places
no projects in pipeline			

8. Writtle / Roxwell / Highwood

Current PAN: 85
Current Capacity: 595

Reception Place Forecast

Year	19/20	20/21	21/22	22/23	23/24	24/25	25/26	26/27	27/28	28/29
+/-	17	-7	23	8	9	9	9	9	9	9
Highwood Primary, Roxwell Primary, Writtle Infant, Writtle Junior										

Capacity Forecast

Year	+/-
19/20	44
20/21	34
21/22	52
22/23	57
23/24	61

Projects Pipeline

School	Year	Description	Places
tbc	20/21	Bulge Class	15/15

9. Margaretting / Stock

Current PAN: 42
Current Capacity: 278

Reception Place Forecast

Year	19/20	20/21	21/22	22/23	23/24	24/25	25/26	26/27	27/28	28/29
+/-	3	3	14	6	6	6	6	6	6	6
Margaretting CE Primary, Stock CE Primary										

Capacity Forecast

Year	+/-
19/20	-5
20/21	-4
21/22	10
22/23	15
23/24	21

Projects Pipeline

School	Year	Description	Places
Margaretting	19/20	Small expansion resolving a deficit of accommodation.	0/16

10. Chelmsford Not Grouped – Boreham

Current PAN: 30
Current Capacity: 236

Reception Place Forecast

Year	19/20	20/21	21/22	22/23	23/24	24/25	25/26	26/27	27/28	28/29
+/-	-1	-7	0	-4	-6	-7	-8	-8	-9	-9
Boreham Primary										

Capacity Forecast

Year	+/-
19/20	15
20/21	8
21/22	3
22/23	-6
23/24	-9

Projects Pipeline

School	Year	Description	Places
no projects in pipeline			

11. Chelmsford Not Grouped – Downham

Current PAN: 36
Current Capacity: 252

Reception Place Forecast

Year	19/20	20/21	21/22	22/23	23/24	24/25	25/26	26/27	27/28	28/29
+/-	19	10	10	13	13	13	13	13	13	13

Capacity Forecast

Year	+/-
19/20	48
20/21	60
21/22	70
22/23	65
23/24	81

Projects Pipeline

School	Year	Description	Places
no projects in pipeline			

Secondary School Planning Groups

1. Chelmsford

Current PAN: 1840

Current Capacity: 11439

Year 7 Place Forecast

Year	19/20	20/21	21/22	22/23	23/24	24/25	25/26	26/27	27/28	28/29
+/-	-130	-119	-143	-370	-303	-345	-344	-346	-432	-357
The Boswells School, Chelmer Valley High School, Chelmsford County High, Great Baddow High School, Hylands School, King Edward VI, Moulsham High School, The Sandon School, St John Payne Catholic School										

Capacity Forecast

Year	+/-
19/20	50
20/21	-136
21/22	-416
22/23	-935
23/24	-1377

Projects Pipeline

School	Year	Description	Places
Beaulieu Park School	19/20	6 form entry new secondary provision	180/900
Beaulieu Park School	22/23	2 form entry expansion	60/300
Moulsham High School	22/23	1 form entry expansion	30/150

The increase in demand forecast from 22/23 onwards is linked to the emerging Local Plan. This plan includes a site for a new secondary school which will be opened at the appropriate time.

2. South Woodham Ferrers / Burnham

Current PAN: 405

Current Capacity: 3126

Year 7 Place Forecast

Year	19/20	20/21	21/22	22/23	23/24	24/25	25/26	26/27	27/28	28/29
+/-	-24	-13	-82	-21	-85	-97	-89	-85	-57	-55
William De Ferrers School, Ormiston Rivers Academy										

Capacity Forecast

Year	+/-
19/20	660
20/21	615
21/22	522
22/23	484
23/24	359

Projects Pipeline

School	Year	Description	Places
no projects in pipeline			

William De Ferrers School has sufficient accommodation to enable it to increase its PAN by up to 3 forms of entry, which can mitigate demand for the foreseeable future.

3.1.3 Maldon

Primary School Planning Groups

1. Tollesbury / Tolleshunt D'Arcy

Current PAN: 60
Current Capacity: 435

Reception Place Forecast

Year	19/20	20/21	21/22	22/23	23/24	24/25	25/26	26/27	27/28	28/29
+/-	11	24	22	16	17	17	17	17	17	17
Tollesbury Primary, Tolleshunt D'Arcy St Nicholas CE Primary										

Capacity Forecast

Year	+/-
19/20	123
20/21	118
21/22	121
22/23	134
23/24	127

Projects Pipeline

School	Year	Description	Places
no projects in pipeline			

2. Maldon / Heybridge

Current PAN: 302
Current Capacity: 2252

Reception Place Forecast

Year	19/20	20/21	21/22	22/23	23/24	24/25	25/26	26/27	27/28	28/29
+/-	55	30	9	1	-14	-26	-38	-50	-60	-69
All Saints CE Primary, Great Totham Primary, Heybridge Primary, Maldon Primary, St Francis Catholic Primary, Wentworth Primary, Woodham Walter CE Primary										

Capacity Forecast

Year	+/-
19/20	260
20/21	231
21/22	164
22/23	93
23/24	15

Projects Pipeline

School	Year	Description	Places
tbc	23/24	Bulge Class	30/30
New Primary School	24/25	1 form entry, able to expand to 2 form entry	30/210

A site for a new primary school has been secured via a S106 agreement at the Limebrook Way development.

3. Burnham / Southminster

Current PAN: 135
Current Capacity: 945

Reception Place Forecast

Year	19/20	20/21	21/22	22/23	23/24	24/25	25/26	26/27	27/28	28/29
+/-	13	6	5	-1	-5	-8	-9	-9	-10	-10
Burnham-on-Crouch Primary, Southminster CE Primary, St Mary's CE Primary										

Capacity Forecast

Year	+/-
19/20	155
20/21	107
21/22	51
22/23	6
23/24	-25

Projects Pipeline

School	Year	Description	Places
tbc	22/23	½ form entry expansion	15/105

4. Maylandsea / Purleigh / Latchingdon / Cold Norton

Current PAN: 114
Current Capacity: 842

Reception Place Forecast

Year	19/20	20/21	21/22	22/23	23/24	24/25	25/26	26/27	27/28	28/29
+/-	12	13	0	7	6	5	5	5	5	5
Cold Norton Primary, Latchingdon CE Primary, Maylandsea Primary, Purleigh Primary										

Capacity Forecast

Year	+/-
19/20	84
20/21	85
21/22	67
22/23	62
23/24	67

Projects Pipeline

School	Year	Description	Places
no projects in pipeline			

5. Bradwell / Tillingham

Current PAN: 50
Current Capacity: 325

Reception Place Forecast

Year	19/20	20/21	21/22	22/23	23/24	24/25	25/26	26/27	27/28	28/29
+/-	8	10	14	9	10	10	10	10	10	10
St Cedd's CE Primary, St Nicholas CE Primary										

Capacity Forecast

Year	+/-
19/20	49
20/21	47
21/22	65
22/23	57
23/24	49

Projects Pipeline

School	Year	Description	Places
no projects in pipeline			

Secondary School Planning Groups

1. South Woodham Ferrers/ Burnham (see Chelmsford Secondary School Planning Groups)

2. Maldon

Current PAN: 295
Current Capacity: 1841

Year 7 Place Forecast

Year	19/20	20/21	21/22	22/23	23/24	24/25	25/26	26/27	27/28	28/29
+/-	18	-4	0	-16	0	-28	-35	-3	-23	-36
The Plume School										

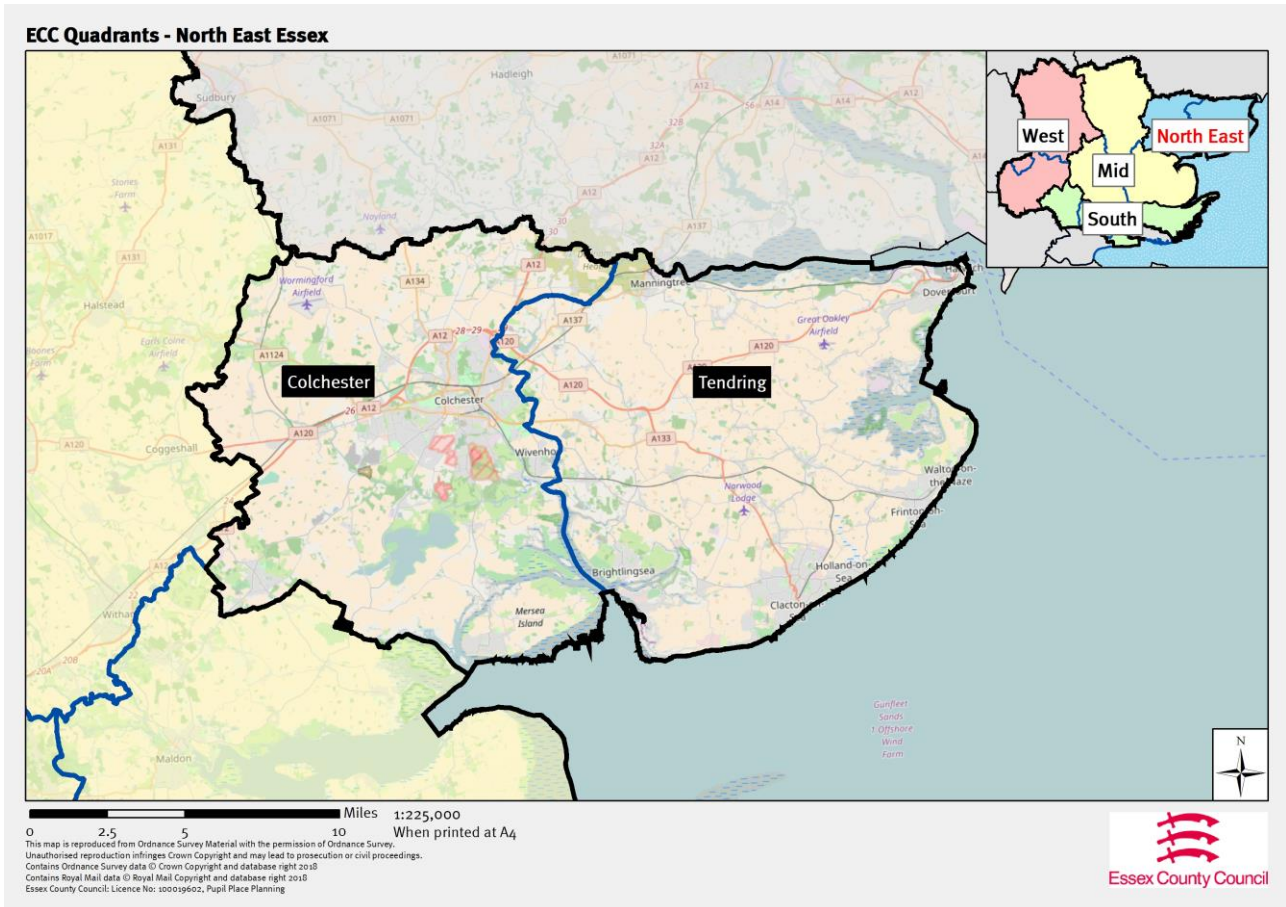
Capacity Forecast

Year	+/-
19/20	183
20/21	136
21/22	110
22/23	40
23/24	21

Projects Pipeline

School	Year	Description	Places
The Plume School	22/23	Phased 2 form entry expansion	60/300

3.2 North East Essex



For the purposes of school organisation and place planning, north east Essex includes Colchester Borough and Tendring District.

A feature of the emerging local plans in this quadrant are large new garden communities, with one planned to the east and one to the west of Colchester, spanning the borders of the neighbouring districts.

3.2.1 Colchester

Primary School Planning Groups

1. Colchester north and rural northeast

Current PAN: 661
Current Capacity: 4657

Reception Place Forecast

Year	19/20	20/21	21/22	22/23	23/24	24/25	25/26	26/27	27/28	28/29
+/-	59	25	34	6	-10	-23	-33	-43	-51	-58
The Bishop William Ward CE Primary, Boxted St Peter's CE Primary, Braiswick Primary, Brinkley Grove Primary, Camulos Primary, Dedham CE Primary, Friars Grove Primary, Heathlands CE Primary, Highwoods Primary, Langham Primary, Myland Primary, North Primary, Queen Boudica Primary, St John's CE Primary										

Capacity Forecast

Year	+/-
19/20	280
20/21	168
21/22	92
22/23	2
23/24	-21

Projects Pipeline

School	Year	Description	Places
Trinity College	23/24	2 form entry primary provision	60/420

Trinity College is a free school currently in the pre-opening phase. A site for the new school has been secured through a S106 agreement. There is a significant amount of new housing planned for the area and pupil numbers are being monitored very closely.

2a. Colchester rural northwest

Current PAN: 124
Current Capacity: 868

Reception Place Forecast

Year	19/20	20/21	21/22	22/23	23/24	24/25	25/26	26/27	27/28	28/29
+/-	25	40	44	33	32	30	29	27	25	24
Chappel CE Primary, Copford CE Primary, Fordham All Saints CE Primary, Great Tey CE Primary, Holy Trinity CE Primary, St Andrew's CE Primary										

Capacity Forecast

Year	+/-
19/20	88
20/21	129
21/22	168
22/23	191
23/24	210

Projects Pipeline

School	Year	Description	Places
no projects in pipeline			

Declining birth rates in the villages in this group are resulting in fewer children in the schools. This change is being monitored closely.

3. Tiptree

Current PAN: 147
Current Capacity: 1029

Reception Place Forecast

Year	19/20	20/21	21/22	22/23	23/24	24/25	25/26	26/27	27/28	28/29
+/-	18	21	43	30	28	26	24	22	19	17
Baynards Primary, Messing Primary, Milldene Primary, Tiptree Heath Primary, St Luke's CE Primary										

Capacity Forecast

Year	+/-
19/20	219
20/21	203
21/22	222
22/23	210
23/24	211

Projects Pipeline

School	Year	Description	Places
no projects in pipeline			

There is expected to be some housing in the area over the next ten years which could lead to a small increase in pupil numbers.

4. Colchester rural southwest

Current PAN: 50
Current Capacity: 360

Reception Place Forecast

Year	19/20	20/21	21/22	22/23	23/24	24/25	25/26	26/27	27/28	28/29
+/-	-1	8	-4	-3	-5	-5	-5	-5	-6	-6
Birch CE Primary, Layer-De-La-Haye CE Primary										

Capacity Forecast

Year	+/-
19/20	13
20/21	18
21/22	13
22/23	8
23/24	0

Projects Pipeline

School	Year	Description	Places
no projects in pipeline			

The schools in this planning group attract a significant number of pupils from outside of the area. Forecasts will be monitored closely to determine whether there is a local need that would require an expansion project.

5a. Colchester southwest / Stanway

Current PAN: 405
Current Capacity: 2977

Reception Place Forecast

Year	19/20	20/21	21/22	22/23	23/24	24/25	25/26	26/27	27/28	28/29
+/-	75	-18	3	11	1	-10	-20	-30	-39	-46
Gosbecks Primary, Hamilton Primary, Home Farm Primary, Lexden Primary , Prettygate Infant, Prettygate Junior, St Teresa's Catholic Primary, Stanway Fiveways Primary, Stanway Primary										

Capacity Forecast

Year	+/-
19/20	350
20/21	276
21/22	231
22/23	167
23/24	111

Projects Pipeline

School	Year	Description	Places
New Primary School	20/21	2 form entry primary school	60/420

A site for a new primary school has been secured through a S106 agreement on the Lakelands development. Other large housing developments are planned in the area and the demand for school places will be kept under constant review.

6. Colchester east

Current PAN: 210
Current Capacity: 1470

Reception Place Forecast

Year	19/20	20/21	21/22	22/23	23/24	24/25	25/26	26/27	27/28	28/29
+/-	30	31	25	20	19	19	19	19	19	19
Hazelmere Infant, Hazelmere Junior, Parsons Heath CE Primary, Roach Vale Primary, Unity Primary, Willow Brook Primary										

Capacity Forecast

Year	+/-
19/20	70
20/21	87
21/22	108
22/23	121
23/24	141

Projects Pipeline

School	Year	Description	Places
no projects in pipeline			

7. Wivenhoe

Current PAN: 90
Current Capacity: 653

Reception Place Forecast

Year	19/20	20/21	21/22	22/23	23/24	24/25	25/26	26/27	27/28	28/29
+/-	-2	3	0	-4	-3	-4	-5	-7	-8	-10

Broomgrove Infant, Broomgrove Junior, Millfields Primary

Capacity Forecast

Year	+/-
19/20	9
20/21	8
21/22	4
22/23	-4
23/24	-6

Projects Pipeline

School	Year	Description	Places
no projects in pipeline			

The number of pre-school children in the area for the next three years is atypically low. Movement of families to and from the University can cause pupil numbers to fluctuate over time and this will be monitored carefully to ensure sufficient school places are available.

8. Colchester south and southeast

Current PAN: 660
Current Capacity: 4532

Reception Place Forecast

Year	19/20	20/21	21/22	22/23	23/24	24/25	25/26	26/27	27/28	28/29
+/-	-4	58	28	10	2	-5	-9	-17	-23	-28

Cherry Tree Primary, Icen Primary, Kendall CE Primary, King's Ford Infant, Monkwick Infant, Monkwick Junior, Montgomery Infant, Montgomery Junior, Old Heath Primary, St George's Infant, St George's New Town Junior, St James' CE Primary, St John's Green Primary, St Michael's CE Primary, St Thomas More's Catholic Primary

Capacity Forecast

Year	+/-
19/20	211
20/21	151
21/22	118
22/23	52
23/24	10

Projects Pipeline

School	Year	Description	Places
New Primary School	21/22	2 form entry primary school	60/420

The DfE has approved a primary free school for central Colchester, which is still in the pre-opening phase and subject to review. This new school will meet the long term demand currently forecast for the area.

9. Colchester rural south

Current PAN: 127
Current Capacity: 886

Reception Place Forecast

Year	19/20	20/21	21/22	22/23	23/24	24/25	25/26	26/27	27/28	28/29
+/-	-12	31	-6	5	4	1	-1	-2	-3	-3
Fingringhoe, Langenhoe, Mersea Island, St Lawrence										

Capacity Forecast

Year	+/-
19/20	7
20/21	44
21/22	18
22/23	7
23/24	12

Projects Pipeline

School	Year	Description	Places
no projects in pipeline			

The schools in this planning group attract a significant number of pupils from outside of the area. Forecasts will be monitored closely to determine whether there is a local need that would require an expansion project.

Secondary School Planning Groups

1. Colchester

Current PAN: 2012
Current Capacity: 10011

Year 7 Place Forecast

Year	19/20	20/21	21/22	22/23	23/24	24/25	25/26	26/27	27/28	28/29
+/-	-38	-136	-273	-296	-475	-374	-435	-343	-337	-359
Colchester Academy, Colchester County High School, Colchester Royal Grammar School, The Gilbert School, Philip Morant School, St Benedict's Catholic College, St Helena School, The Stanway School, The Thomas Lord Audley School										

Capacity Forecast

Year	+/-
19/20	-574
20/21	-885
21/22	-1360
22/23	-1860
23/24	-2436

Projects Pipeline

School	Year	Description	Places
Paxman Academy	19/20	New 6 form entry school	180/900
Trinity College	21/22	New 6 form entry secondary provision	180/900

Trinity College is a free school currently in the pre opening phase. A site for the new school has been secured by S106 agreement.

2. Tiptree

Current PAN: 210
Current Capacity: 1275

Year 7 Place Forecast

Year	19/20	20/21	21/22	22/23	23/24	24/25	25/26	26/27	27/28	28/29
+/-	-8	21	-17	12	8	-6	27	1	13	35
Thurstable School										

Capacity Forecast

Year	+/-
19/20	58
20/21	77
21/22	63
22/23	69
23/24	88

Projects Pipeline

School	Year	Description	Places
Thurstable School	21/22	Bulge Class	30/0

3.2.2 Tendring

Primary School Planning Groups

1. Little Clacton / Tendring / Thorpe / Weeley

Current PAN: 118
Current Capacity: 822

Reception Place Forecast

Year	19/20	20/21	21/22	22/23	23/24	24/25	25/26	26/27	27/28	28/29
+/-	7	-2	17	-6	-11	-15	-19	-22	-25	-28
Engaines Primary, Rolph CE Primary, Tendring Primary, Weeley St Andrew's CE Primary										

Capacity Forecast

Year	+/-
19/20	-24
20/21	-35
21/22	-31
22/23	-52
23/24	-70

Projects Pipeline

School	Year	Description	Places
no projects in pipeline			

In the short to medium term, no expansion is planned, as a high proportion of pupils come to these schools from outside of the area. As the pattern of demand settles there may be need for expansion in the medium to longer term.

2. Clacton

Current PAN: 630
Current Capacity: 4435

Reception Place Forecast

Year	19/20	20/21	21/22	22/23	23/24	24/25	25/26	26/27	27/28	28/29
+/-	36	64	25	26	13	0	-10	-21	-29	-35
Alton Park Junior, Burrsville Infant, Cann Hall Primary, Frobisher Primary, Great Clacton CE Junior, Holland Haven Primary, Holland Park Primary, The Oakwood Infant, Ravens Primary, St Clare's Catholic Primary, St Osyth CE Primary, White Hall Primary										

Capacity Forecast

Year	+/-
19/20	-35
20/21	38
21/22	55
22/23	108
23/24	136

Projects Pipeline

School	Year	Description	Places
New Primary School	24/25	1 form entry, able to expand to 2 form entry	30/210

A site for a new primary school forms part of the planning application for the Rouse's Farm development. Declining birth rates in the town are expected to be offset by substantial housing over the period of the plan.

3. Brightlingsea / Elmstead

Current PAN: 187
Current Capacity: 1386

Reception Place Forecast

Year	19/20	20/21	21/22	22/23	23/24	24/25	25/26	26/27	27/28	28/29
+/-	-22	15	-9	-24	-31	-39	-45	-51	-55	-58
Alresford Primary, Brightlingsea Infant, Brightlingsea Junior, Elmstead Primary, Great Bentley Primary, St George's CE Primary										

Capacity Forecast

Year	+/-
19/20	-2
20/21	-7
21/22	-56
22/23	-108
23/24	-130

Projects Pipeline

School	Year	Description	Places
Alresford Primary	19/20	Small expansion	10/70
tbc	19/20	Bulge Class	30/0
tbc	21/22	1 form entry expansion	30/210

Solutions for the demand forecast in 19/20 and 21/22 onwards are being finalised with local schools.

The increase in demand forecast from 24/25 onwards is linked to the emerging Local Plan, with associated sites for new primary schools.

4. Frinton / Walton

Current PAN: 130
Current Capacity: 956

Reception Place Forecast

Year	19/20	20/21	21/22	22/23	23/24	24/25	25/26	26/27	27/28	28/29
+/-	-13	-4	-8	-14	-19	-25	-31	-36	-39	-41
Frinton-on-Sea Primary, Hamford Primary, Kirby Primary, Walton-on-the-Naze Primary										

Capacity Forecast

Year	+/-
19/20	-37
20/21	-30
21/22	-22
22/23	-50
23/24	-78

Projects Pipeline

School	Year	Description	Places
Hamford Primary	19/20	½ form entry expansion	20/140
tbc	24/25	1 form entry expansion	30/210

Expansion of Hamford Primary is expected to cater for demand in the short to medium term, and options for the longer term are being explored with the other schools in the group.

5. Harwich and surrounds

Current PAN: 303
Current Capacity: 2092

Reception Place Forecast

Year	19/20	20/21	21/22	22/23	23/24	24/25	25/26	26/27	27/28	28/29
+/-	2	-7	-7	-12	-19	-21	-23	-25	-27	-28
All Saints CE Primary (Dovercourt), All Saints CE Primary (Gt Oakley), Chase Lane Primary, Harwich Primary, The Mayflower Primary, Spring Meadow Primary, St Joseph's Catholic Primary, Two Village CE Primary, Wix and Wrabness Primary										

Capacity Forecast

Year	+/-
19/20	45
20/21	6
21/22	-48
22/23	-90
23/24	-132

Projects Pipeline

School	Year	Description	Places
The Mayflower Primary	20/21	Small expansion	10/70
tbc	22/23	1 form entry expansion	30/210

Expansion of The Mayflower Primary is expected to cater for demand in the short to medium term, and options for the longer term are being explored with the other schools in the group.

6. Manningtree and surrounds

Current PAN: 128
Current Capacity: 855

Reception Place Forecast

Year	19/20	20/21	21/22	22/23	23/24	24/25	25/26	26/27	27/28	28/29
+/-	4	7	-6	-7	-13	-18	-22	-26	-30	-33
Ardleigh St Mary's CE Primary, Bradfield Primary, Highfields Primary, Lawford CE Primary, Mistley Norman CE Primary										

Capacity Forecast

Year	+/-
19/20	23
20/21	14
21/22	-30
22/23	-76
23/24	-114

Projects Pipeline

School	Year	Description	Places
Lawford Primary	21/22	1 form entry expansion	30/210

There will be substantial new housing in the Lawford area and the expansion of Lawford Primary is expected to cater for the additional need created. Pupil numbers at other schools in the group are being monitored carefully.

Secondary School Planning Groups

1. Clacton

Current PAN: 861
Current Capacity: 5065

Year 7 Place Forecast

Year	19/20	20/21	21/22	22/23	23/24	24/25	25/26	26/27	27/28	28/29
+/-	-36	-65	-100	-111	-125	-44	-122	-72	-39	-63
Clacton Coastal Academy, Clacton County High School, Tendring Technology College										

Capacity Forecast

Year	+/-
19/20	120
20/21	-11
21/22	-195
22/23	-340
23/24	-565

Projects Pipeline

School	Year	Description	Places
Clacton Coastal Academy	19/20	Bulge Class	60/0
tbc	20/21	3 form entry of expansion	90/450

Expansion plans to accommodate the forecast demand for school places from 20/21 onwards are being finalised with the local schools.

2. Brightlingsea

Current PAN: 248
Current Capacity: 1488

Year 7 Place Forecast

Year	19/20	20/21	21/22	22/23	23/24	24/25	25/26	26/27	27/28	28/29
+/-	-26	-19	-31	-29	-48	-86	-71	-63	-26	-35
Colne Community School and College										

Capacity Forecast

Year	+/-
19/20	21
20/21	2
21/22	-31
22/23	-54
23/24	-92

Projects Pipeline

School	Year	Description	Places
Colne Community School	21/22	2 form entry expansion	60/300

3. Harwich

Current PAN: 260
Current Capacity: 1433

Year 7 Place Forecast

Year	19/20	20/21	21/22	22/23	23/24	24/25	25/26	26/27	27/28	28/29
+/-	46	42	38	19	37	9	-7	10	9	27
Harwich and Dovercourt High School										

Capacity Forecast

Year	+/-
19/20	325
20/21	314
21/22	279
22/23	247
23/24	225

Projects Pipeline

School	Year	Description	Places
no projects in pipeline			

4. Manningtree

Current PAN: 174
Current Capacity: 870

Year 7 Place Forecast

Year	19/20	20/21	21/22	22/23	23/24	24/25	25/26	26/27	27/28	28/29
+/-	10	-9	4	-11	-36	-15	-16	-31	-21	-19
Manningtree High School										

Capacity Forecast

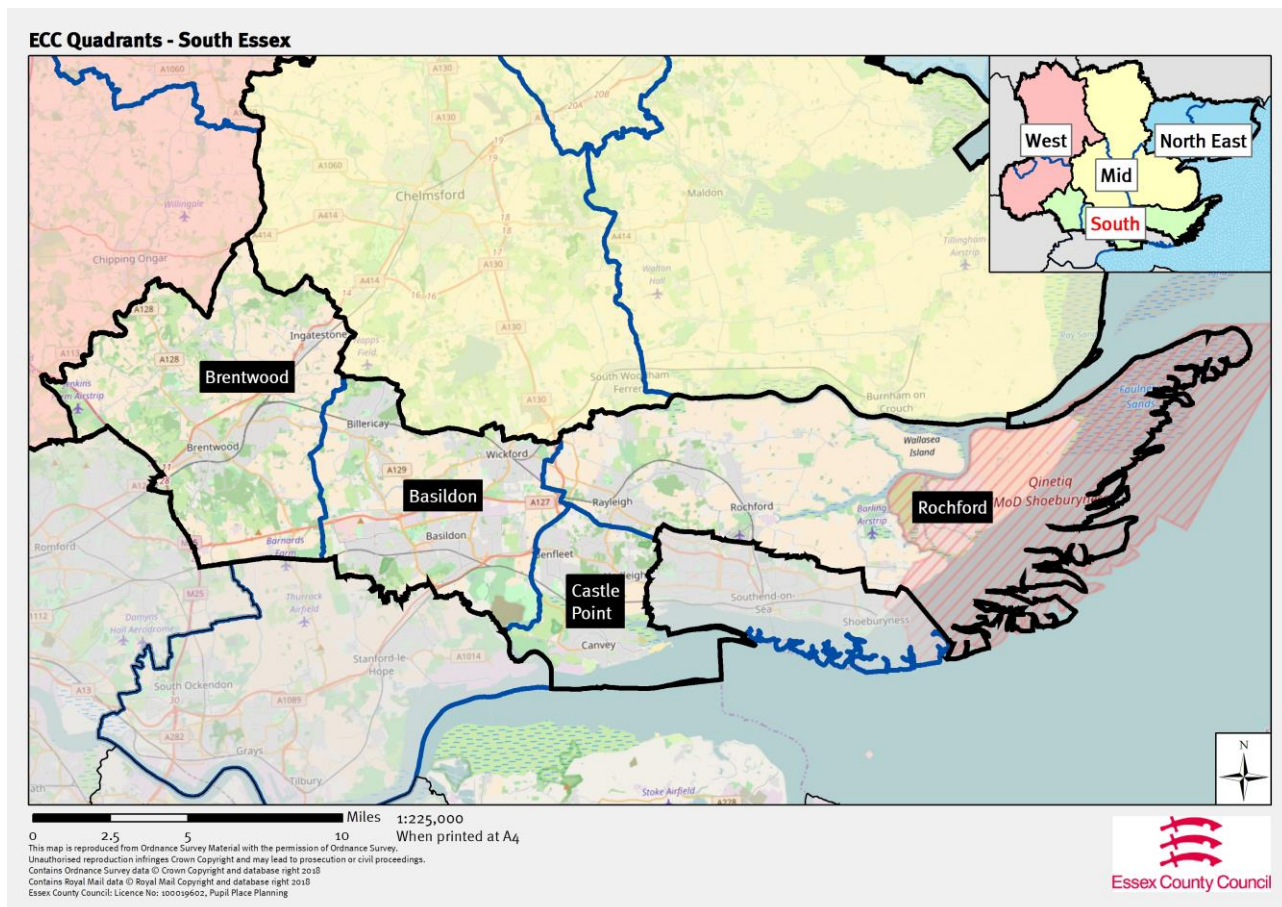
Year	+/-
19/20	26
20/21	5
21/22	-8
22/23	-36
23/24	-84

Projects Pipeline

School	Year	Description	Places
Manningtree High School	20/21	1 form entry expansion	30/150

There will be substantial new housing in the Lawford area and the expansion of the High School is expected to cater for the additional need created.

3.3 South Essex



For the purposes of school organisation and place planning, south Essex includes the districts and boroughs of Basildon, Brentwood, Castle Point and Rochford. Bordering London, Southend, and Thurrock authorities, the demand for school places in this quadrant of the county is influenced considerably by cross-border pupil movement.

At the time the forecasts for this document were created, none of the authorities within this quadrant had published a Reg 19 consultation for their local plan, and therefore local plan housing (apart from that already with planning permission) has not been included in the forecasts. We would therefore expect medium to long term forecasts for these areas to increase in future iterations of this plan.

3.3.1 Basildon

Primary School Planning Groups

1. Billericay

Current PAN: 420

Current Capacity: 3073

Reception Place Forecast

Year	19/20	20/21	21/22	22/23	23/24	24/25	25/26	26/27	27/28	28/29
+/-	16	5	-53	-5	-9	-12	-12	-14	-14	-14
Brightside Primary, Buttsbury Infant, Buttsbury Junior, Quilters Infant, Quilters Junior, South Green Infant, South Green Junior School, St Peter's Catholic Primary, Sunnymede Infant, Sunnymede Junior										

Capacity Forecast

Year	+/-
19/20	52
20/21	94
21/22	68
22/23	68
23/24	63

Projects Pipeline

School	Year	Description	Places
Brightside Primary	19/20	1 form entry expansion	30/210
tbc	21/22	Bulge Class	30/30

2. Wickford/ Runwell

Current PAN: 435

Current Capacity: 2914

Reception Place Forecast

Year	19/20	20/21	21/22	22/23	23/24	24/25	25/26	26/27	27/28	28/29
+/-	8	21	34	9	2	-3	-6	-8	-9	-10
Abacus Primary, Grange Primary, Hilltop Infant, Hilltop Junior, North Crescent Primary, Oakfield Primary, Runwell Primary, The Wickford CE Infant, Wickford Primary										

Capacity Forecast

Year	+/-
19/20	12
20/21	-33
21/22	-65
22/23	-95
23/24	-121

Projects Pipeline

School	Year	Description	Places
New Primary School	23/24	1fe entry, with infrastructure to enable future expansion	30/210

Much of the proposed new housing in Wickford has been delayed, creating the need to postpone planned increases and reorganisation of the primary places in Wickford town.

3a. Basildon central / Laindon / Langdon Hills

Current PAN: 1325
Current Capacity: 9104

Reception Place Forecast

Year	19/20	20/21	21/22	22/23	23/24	24/25	25/26	26/27	27/28	28/29
+/-	80	79	120	78	64	56	52	44	42	42
Bardfield Primary, Cherry Tree Primary, Fairhouse Infant, Fairhouse Junior, Ghyllgrove Infant, Ghyllgrove Junior, Great Berry Primary, Greensted Infant, Greensted Junior, Janet Duke Primary, Kingswood Infant, Kingswood Junior, Laindon Park Primary, Lee Chapel Primary, Lincewood Primary, Merrylands Primary, Millhouse Infant, Millhouse Junior, Noak Bridge Primary, Phoenix Primary, Ryedene Primary, St Anne Line Catholic Infant, St Anne Line Catholic Junior, St Teresa's Catholic Primary, Vange Primary, Whitmore Primary, Willows Primary										

Capacity Forecast

Year	+/-
19/20	211
20/21	131
21/22	147
22/23	128
23/24	183

Projects Pipeline

School	Year	Description	Places
Ryedene Primary	19/20	1 form entry expansion	30/210
Merrylands Primary	20/21	1 form entry expansion	30/210
New Primary School	25/26	1 form entry, able to expand to 2 form entry	30/210

There is a high level of mid-year inward migration to Basildon. Migration from London and abroad appears to be a significant factor. As a result demand for school places is exceeding the forecasts, therefore expansion projects will proceed to ensure sufficient capacity is maintained.

5. Pitsea / Bowers Gifford

Current PAN: 315
Current Capacity: 2205

Reception Place Forecast

Year	19/20	20/21	21/22	22/23	23/24	24/25	25/26	26/27	27/28	28/29
+/-	-26	-9	15	-7	-8	-8	-8	-8	-8	-8
Briscoe Primary, Eversley Primary, Felmore Primary, Northlands Primary, Maple Grove Primary, St Margaret's CE Primary										

Capacity Forecast

Year	+/-
19/20	-6
20/21	-18
21/22	-10
22/23	-26
23/24	-36

Projects Pipeline

School	Year	Description	Places
tbc	19/20	Bulge Class	30/30
Northlands Primary	22/23	½ form entry expansion	15/105

The increased demand for places in the area may lead to the creation of additional primary capacity earlier than planned.

6. Not Grouped – Crays Hill

Current PAN: 15
Current Capacity: 105

Reception Place Forecast

Year	19/20	20/21	21/22	22/23	23/24	24/25	25/26	26/27	27/28	28/29
+/-	8	10	6	8	8	8	8	8	8	8
Crays Hill Primary										

Capacity Forecast

Year	+/-
19/20	41
20/21	45
21/22	46
22/23	53
23/24	57

Projects Pipeline

School	Year	Description	Places
no projects in pipeline			

Secondary School Planning Groups

1. Basildon / Billericay / Wickford

Current PAN: 2094

Current Capacity: 11787

Year 7 Place Forecast

Year	19/20	20/21	21/22	22/23	23/24	24/25	25/26	26/27	27/28	28/29
+/-	199	188	158	141	65	49	128	134	154	172
Basildon Lower Academy, Basildon Upper Academy, Beauchamps High School, The Billericay School, The Bromfords School, De La Salle School, The James Hornsby School, Mayflower High School, Woodlands School										

Capacity Forecast

Year	+/-
19/20	1332
20/21	1292
21/22	1209
22/23	1138
23/24	925

Projects Pipeline

School	Year	Description	Places
no projects in pipeline			

3.3.2 Brentwood

Primary School Planning Groups

1. Brentwood Town

Current PAN: 693

Current Capacity: 4883

Reception Place Forecast

Year	19/20	20/21	21/22	22/23	23/24	24/25	25/26	26/27	27/28	28/29
+/-	-11	13	25	2	-1	-4	-4	-5	-5	-5
Bentley St Paul's CE Primary, Hogarth Primary, Holly Trees Primary, Hutton All Saints' CE Primary , Ingrave Johnstone CE Primary, Larchwood Primary, Long Ridings Primary, St Helen's Catholic Junior, St Helen's Catholic Infant , St Joseph the Worker Catholic Primary, St Mary's CE Primary, St Peter's CE Primary, St Thomas of Canterbury CE Infant, St Thomas of Canterbury CE Junior, Warley Primary, Willowbrook Primary										

Capacity Forecast

Year	+/-
19/20	162
20/21	110
21/22	75
22/23	46
23/24	41

Projects Pipeline

School	Year	Description	Places
Warley Primary	19/20	1 form entry expansion	30/210

Creation of new housing has been slower than first expected in the centre of town, but new school places are still required to the south of Brentwood.

2. Ingatestone / Mountnessing

Current PAN: 60

Current Capacity: 420

Reception Place Forecast

Year	19/20	20/21	21/22	22/23	23/24	24/25	25/26	26/27	27/28	28/29
+/-	-5	-20	-9	-10	-10	-10	-10	-10	-10	-10
Ingatestone CE Infant, Ingatestone Junior, Mountnessing CE Primary										

Capacity Forecast

Year	+/-
19/20	9
20/21	-20
21/22	-29
22/23	-40
23/24	-50

Projects Pipeline

School	Year	Description	Places
tbc	20/21	½ form entry expansion	15/105

New places are needed due to the housing being developed in the area.

3. Doddington / Kelvedon Hatch

Current PAN: 115
Current Capacity: 810

Reception Place Forecast

Year	19/20	20/21	21/22	22/23	23/24	24/25	25/26	26/27	27/28	28/29
+/-	-17	-19	-18	-23	-23	-23	-23	-23	-23	-23
Blackmore Primary, Doddington Infant, Doddington CE Junior, Kelvedon Hatch Primary										

Capacity Forecast

Year	+/-
19/20	45
20/21	21
21/22	-21
22/23	-50
23/24	-77

Projects Pipeline

School	Year	Description	Places
no projects in the pipeline			

The schools in this planning group attract a significant number of pupils from outside of the area (where additional capacity is being provided). Forecasts will be monitored closely to determine whether there is a local need that would require an expansion project.

4. Not Grouped – West Horndon

Current PAN: 15
Current Capacity: 125

Reception Place Forecast

Year	19/20	20/21	21/22	22/23	23/24	24/25	25/26	26/27	27/28	28/29
+/-	-9	-12	-17	-11	-11	-11	-11	-11	-11	-11
West Horndon Primary										

Capacity Forecast

Year	+/-
19/20	-22
20/21	-37
21/22	-48
22/23	-54
23/24	-56

Projects Pipeline

School	Year	Description	Places
West Horndon	19/20	½ form entry expansion	15/105

Secondary School Planning Groups

1. Brentwood/ Shenfield

Current PAN: 977
Current Capacity: 6844

Year 7 Place Forecast

Year	19/20	20/21	21/22	22/23	23/24	24/25	25/26	26/27	27/28	28/29
+/-	-17	1	15	-18	-34	-29	-45	-71	-20	35

Becket Keys CE Free School, Brentwood County High School, Brentwood Ursuline Convent High School, Shenfield High School, St Martin's School

Capacity Forecast

Year	+/-
19/20	582
20/21	566
21/22	610
22/23	594
23/24	549

Projects Pipeline

School	Year	Description	Places
no projects in pipeline			

There is sufficient capacity at existing schools to increase their PAN to mitigate the forecast deficit of places.

2. Not Grouped – Anglo European

Current PAN: 210
Current Capacity: 1338

Year 7 Place Forecast

Year	19/20	20/21	21/22	22/23	23/24	24/25	25/26	26/27	27/28	28/29
+/-	0	-1	-1	-1	-1	-1	-1	-1	-1	-1

Anglo European School

Capacity Forecast

Year	+/-
19/20	-35
20/21	-43
21/22	-41
22/23	-55
23/24	-38

Projects Pipeline

School	Year	Description	Places
no projects in pipeline			

3.3.3 Castle Point

Primary School Planning Groups

1. Canvey Island

Current PAN: 450
Current Capacity: 2994

Reception Place Forecast

Year	19/20	20/21	21/22	22/23	23/24	24/25	25/26	26/27	27/28	28/29
+/-	50	53	48	54	51	51	51	51	51	51
Canvey Island Infant, Canvey Junior, Leigh Beck Infant, Leigh Beck Junior, Lubbins Park Primary, Northwick Park Primary, St Joseph's Catholic Primary, St Katherine's CE Primary, William Read Primary, Winter Gardens Primary										

Capacity Forecast

Year	+/-
19/20	84
20/21	95
21/22	141
22/23	171
23/24	175

Projects Pipeline

School	Year	Description	Places
no projects in pipeline			

2a. Thundersley / Benfleet

Current PAN: 420
Current Capacity: 2913

Reception Place Forecast

Year	19/20	20/21	21/22	22/23	23/24	24/25	25/26	26/27	27/28	28/29
+/-	-10	-24	-46	-31	-32	-32	-32	-32	-32	-32
Kingston Primary, Montgomerie Primary, Robert Drake Primary, Thundersley Primary, Woodham Ley Primary, Holy Family Primary, Jotmans Hall Primary, Kents Hill Infant, Kents Hill Junior, South Benfleet Primary										

Capacity Forecast

Year	+/-
19/20	-49
20/21	-77
21/22	-120
22/23	-138
23/24	-178

Projects Pipeline

School	Year	Description	Places
tbc	19/20	Bulge Class	30/30
tbc	20/21	1 form entry expansion	30/210

There has been a high level of mid-year growth over the past year in several year groups. Migration from London and other areas appears to be a significant factor.

3. Hadleigh

Current PAN: 120
Current Capacity: 892

Reception Place Forecast

Year	19/20	20/21	21/22	22/23	23/24	24/25	25/26	26/27	27/28	28/29
+/-	2	-12	13	4	3	3	3	3	3	3
Hadleigh Infant, Hadleigh Junior School, Westwood Primary										

Capacity Forecast

Year	+/-
19/20	85
20/21	56
21/22	69
22/23	73
23/24	76

Projects Pipeline

School	Year	Description	Places
tbc	20/21	Bulge Class	30/30

Secondary School Planning Groups

1. Benfleet

Current PAN: 740
Current Capacity: 4220

Year 7 Place Forecast

Year	19/20	20/21	21/22	22/23	23/24	24/25	25/26	26/27	27/28	28/29
+/-	-2	44	-37	-51	-6	-43	-69	-26	-20	24
The Appleton School, The Deanes, The King John School										

Capacity Forecast

Year	+/-
19/20	-90
20/21	-56
21/22	-116
22/23	-171
23/24	-187

Projects Pipeline

School	Year	Description	Places
no projects in pipeline			

King John particularly attracts an increasing number of pupils from Southend. The admissions criteria allows the school to accommodate local children before Southend children as demand grows. ECC are in contact with Southend Borough Council regarding this.

2. Canvey Island

Current PAN: 420
Current Capacity: 2100

Year 7 Place Forecast

Year	19/20	20/21	21/22	22/23	23/24	24/25	25/26	26/27	27/28	28/29
+/-	29	55	16	29	46	12	56	52	60	63
Castle View School, Cornelius Vermuyden										

Capacity Forecast

Year	+/-
19/20	253
20/21	251
21/22	211
22/23	185
23/24	174

Projects Pipeline

School	Year	Description	Places
no projects in pipeline			

3.3.4 Rochford

Primary School Planning Groups

1. Rayleigh

Current PAN: 425
Current Capacity: 3038

Reception Place Forecast

Year	19/20	20/21	21/22	22/23	23/24	24/25	25/26	26/27	27/28	28/29
+/-	37	31	50	22	15	9	4	0	-3	-4
Down Hall Primary, Edward Francis Primary, Glebe Primary, Grove Wood Primary, Our Lady of Ransom Catholic Primary, Rayleigh Primary, St Nicholas CE Primary, Wyburns Primary										

Capacity Forecast

Year	+/-
19/20	170
20/21	213
21/22	275
22/23	254
23/24	214

Projects Pipeline

School	Year	Description	Places
tbc	26/27	1 form entry of additional capacity	30/210

A site for primary education provision has been secured through a S106 agreement at the London Road development.

2. Rochford

Current PAN: 177
Current Capacity: 1239

Reception Place Forecast

Year	19/20	20/21	21/22	22/23	23/24	24/25	25/26	26/27	27/28	28/29
+/-	20	22	22	14	9	5	2	-1	-4	-6
Holt Farm Infant, Holt Farm Junior, Rochford Primary, St Teresa's Catholic Primary, Stambridge Primary, Waterman Primary										

Capacity Forecast

Year	+/-
19/20	137
20/21	130
21/22	108
22/23	110
23/24	74

Projects Pipeline

School	Year	Description	Places
tbc	26/27	1 form entry of additional capacity	30/210

A site for primary education provision has been secured through a S106 agreement at the Hall Road development.

3. Hockley

Current PAN: 225
Current Capacity: 1576

Reception Place Forecast

Year	19/20	20/21	21/22	22/23	23/24	24/25	25/26	26/27	27/28	28/29
+/-	15	24	-29	4	2	1	1	0	0	0
Ashingdon Primary, Hockley Primary, Plumberow Primary, Westerings Primary										

Capacity Forecast

Year	+/-
19/20	58
20/21	68
21/22	37
22/23	38
23/24	12

Projects Pipeline

School	Year	Description	Places
tbc	21/22	Bulge Class	30/30

The pattern of increasing migration to the area is being monitored to ensure sufficient capacity is available.

4. Barling / Gt Wakering

Current PAN: 85
Current Capacity: 595

Reception Place Forecast

Year	19/20	20/21	21/22	22/23	23/24	24/25	25/26	26/27	27/28	28/29
+/-	-9	-6	-29	-14	-17	-18	-19	-19	-19	-19
Barling Magna Primary, Great Wakering Primary										

Capacity Forecast

Year	+/-
19/20	7
20/21	-9
21/22	-59
22/23	-92
23/24	-113

Projects Pipeline

School	Year	Description	Places
tbc	21/22	up to 1 form entry expansion	up to 30/210

5. Not Grouped - Canewdon

Current PAN: 22
Current Capacity: 157

Reception Place Forecast

Year	19/20	20/21	21/22	22/23	23/24	24/25	25/26	26/27	27/28	28/29
+/-	5	4	-14	-1	-1	-1	-1	-1	-1	-1
Canewdon Endowed Primary										

Capacity Forecast

Year	+/-
19/20	30
20/21	32
21/22	14
22/23	4
23/24	-2

Projects Pipeline

School	Year	Description	Places
Canewdon Endowed Primary	21/22	Bulge Class	15/15

6. Not Grouped - Riverside

Current PAN: 45
Current Capacity: 454

Reception Place Forecast

Year	19/20	20/21	21/22	22/23	23/24	24/25	25/26	26/27	27/28	28/29
+/-	13	-5	0	-1	-4	-7	-10	-13	-14	-15
Riverside Primary										

Capacity Forecast

Year	+/-
19/20	155
20/21	132
21/22	120
22/23	106
23/24	104

Projects Pipeline

School	Year	Description	Places
Riverside Primary	22/23	tbc	tbc

Secondary School Planning Groups

1. Rayleigh

Current PAN: 548
Current Capacity: 3190

Year 7 Place Forecast

Year	19/20	20/21	21/22	22/23	23/24	24/25	25/26	26/27	27/28	28/29
+/-	14	-5	-49	32	35	41	-11	52	42	59
The Fitzwimarc School, The Sweyne Park School										

Capacity Forecast

Year	+/-
19/20	103
20/21	73
21/22	9
22/23	23
23/24	50

Projects Pipeline

School	Year	Description	Places
no projects in pipeline			

As housing plans are progressed in the area, developer contributions will be used to expand The Sweyne Park School to accommodate pupils from new housing.

2. Rochford / Hockley

Current PAN: 495
Current Capacity: 3280

Year 7 Place Forecast

Year	19/20	20/21	21/22	22/23	23/24	24/25	25/26	26/27	27/28	28/29
+/-	-36	-75	-84	-110	-45	-73	-76	-77	-36	-74
Greensward Academy, The King Edmund School										

Capacity Forecast

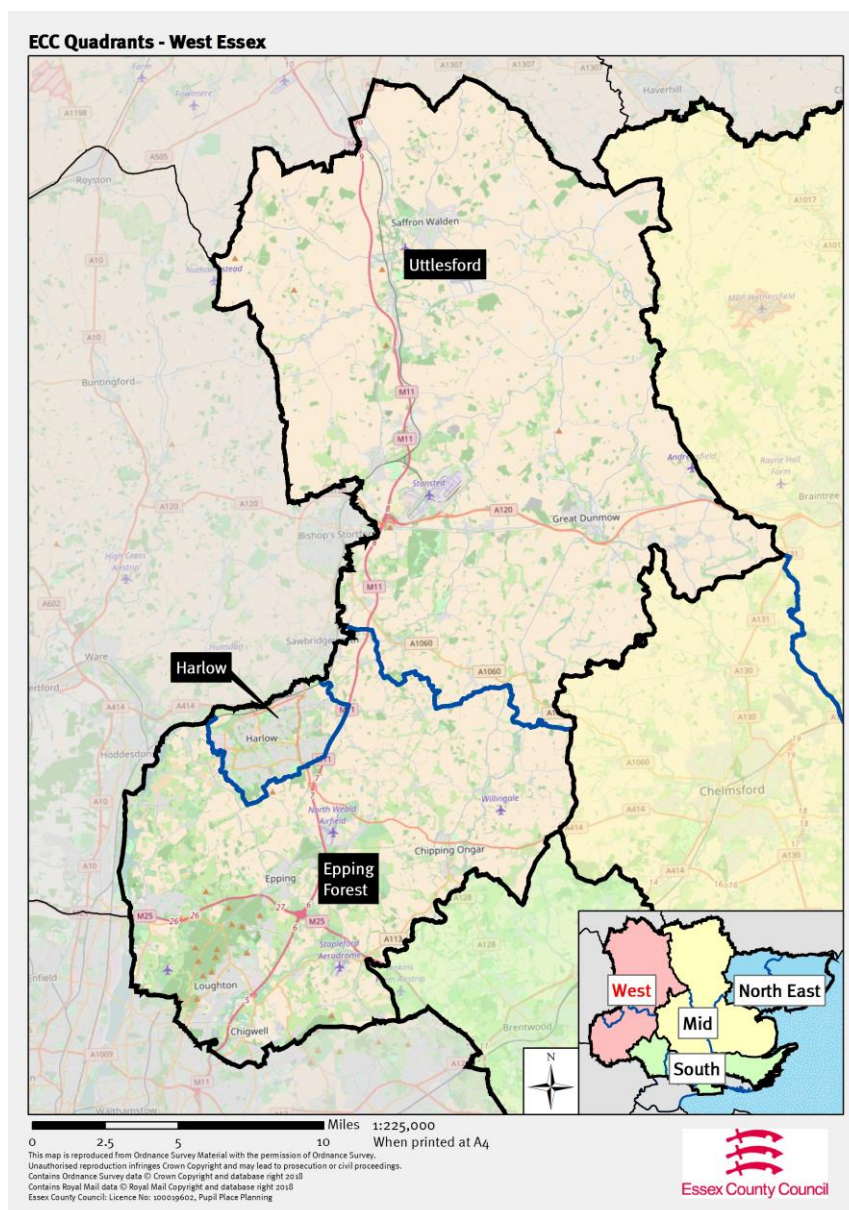
Year	+/-
19/20	267
20/21	189
21/22	104
22/23	-2
23/24	-43

Projects Pipeline

School	Year	Description	Places
no projects in pipeline			

These schools draw in a very high number of pupils from Southend. The admissions criteria of the schools will enable them to accommodate local children before Southend children as local demand grows. ECC are in contact with Southend Borough Council about this.

3.4 West Essex



For the purposes of school organisation and place planning, west Essex includes Uttlesford and Epping Forest districts, as well as Harlow. Demand for secondary school places in this quadrant of the county is influenced considerably by cross-border pupil movement to London and Hertfordshire.

Epping Forest have submitted their draft Plan to the Secretary of State for Inspection and the other two councils are expected to have theirs ready for submission early this year.

3.4.1 Epping Forest

Primary School Planning Groups

1. Ongar

Current PAN: 142

Current Capacity: 990

Reception Place Forecast

Year	19/20	20/21	21/22	22/23	23/24	24/25	25/26	26/27	27/28	28/29
+/-	30	18	20	20	14	9	4	1	-1	-3
Chipping Ongar Primary, Dr Walker's CE Primary, High Ongar Primary, Matching Green CE Primary, Moreton CE Primary, Shelley Primary										

Capacity Forecast

Year	+/-
19/20	128
20/21	127
21/22	109
22/23	104
23/24	96

Projects Pipeline

School	Year	Description	Places
no projects in pipeline			

2. Epping

Current PAN: 225

Current Capacity: 1600

Reception Place Forecast

Year	19/20	20/21	21/22	22/23	23/24	24/25	25/26	26/27	27/28	28/29
+/-	3	33	4	7	-8	-25	-43	-61	-80	-99
Coopersale and Theydon Garnon CE Primary, Epping, Epping Upland CE Primary, Ivy Chimneys Primary, St Andrew's CE Primary										

Capacity Forecast

Year	+/-
19/20	142
20/21	136
21/22	103
22/23	40
23/24	3

Projects Pipeline

School	Year	Description	Places
New Primary School	23/24	1 form entry, able to expand to 2 form entry	30/210

A site for a new primary school is included in the emerging Local Plan.

3. Waltham Abbey

Current PAN: 240
Current Capacity: 1704

Reception Place Forecast

Year	19/20	20/21	21/22	22/23	23/24	24/25	25/26	26/27	27/28	28/29
+/-	9	34	-8	15	10	4	-1	-6	-11	-16
High Beech CE Primary, Hillhouse CE Primary, Leverton Primary, Upshire Primary, Waltham Holy Cross Primary										

Capacity Forecast

Year	+/-
19/20	46
20/21	70
21/22	36
22/23	34
23/24	20

Projects Pipeline

School	Year	Description	Places
tbc	21/22	Bulge Class	30/30
tbc	25/26	1 form entry expansion	30/210

4a. Buckhurst Hill / Loughton

Current PAN: 615
Current Capacity: 4153

Reception Place Forecast

Year	19/20	20/21	21/22	22/23	23/24	24/25	25/26	26/27	27/28	28/29
+/-	52	63	59	51	43	35	30	21	18	16
Alderton Infant, Alderton Junior, Buckhurst Hill Primary, Hereward Primary, St John's CE Primary, St John Fisher Catholic Primary, Staples Road Primary, Theydon Bois Primary, Thomas Willingale Primary, White Bridge Primary										

Capacity Forecast

Year	+/-
19/20	270
20/21	255
21/22	223
22/23	194
23/24	148

Projects Pipeline

School	Year	Description	Places
no projects in pipeline			

5. Chigwell / Lambourne

Current PAN: 170
Current Capacity: 1129

Reception Place Forecast

Year	19/20	20/21	21/22	22/23	23/24	24/25	25/26	26/27	27/28	28/29
+/-	-5	8	-1	-1	-4	-5	-6	-8	-8	-9
Chigwell Primary, Chigwell Row Infant, Lambourne Primary, Limes Farm Infant , Limes Farm Junior, Stapleford Abbots Primary										

Capacity Forecast

Year	+/-
19/20	98
20/21	68
21/22	37
22/23	8
23/24	-19

Projects Pipeline

School	Year	Description	Places
no projects in pipeline			

The schools in this planning group attract a significant number of pupils from outside of the area. Forecasts will be monitored closely to determine whether there is a local need that would require an expansion project.

6. Not Grouped - Roydon

Current PAN: 30
Current Capacity: 210

Reception Place Forecast

Year	19/20	20/21	21/22	22/23	23/24	24/25	25/26	26/27	27/28	28/29
+/-	0	1	2	0	-2	-2	-2	-2	-2	-2
Roydon Primary										

Capacity Forecast

Year	+/-
19/20	2
20/21	3
21/22	-8
22/23	-8
23/24	-10

Projects Pipeline

School	Year	Description	Places
no projects in pipeline			

7. Not Grouped - Nazeing

Current PAN: 45
Current Capacity: 300

Reception Place Forecast

Year	19/20	20/21	21/22	22/23	23/24	24/25	25/26	26/27	27/28	28/29
+/-	-3	-12	-12	-12	-13	-13	-14	-14	-14	-14
Nazeing Primary										

Capacity Forecast

Year	+/-
19/20	16
20/21	-20
21/22	-47
22/23	-68
23/24	-84

Projects Pipeline

School	Year	Description	Places
Nazeing Primary	20/21	½ form entry expansion	15/105

Secondary School Planning Groups

1. Loughton

Current PAN: 874
Current Capacity: 4693

Year 7 Place Forecast

Year	19/20	20/21	21/22	22/23	23/24	24/25	25/26	26/27	27/28	28/29
+/-	-5	-57	-106	-149	-140	-242	-180	-204	-190	-203
Davenant, Debden Park High School, Roding Valley High School, West Hatch High School										

Capacity Forecast

Year	+/-
19/20	-102
20/21	-277
21/22	-505
22/23	-772
23/24	-1108

Projects Pipeline

School	Year	Description	Places
no projects in pipeline			

These schools draw in a very high number of pupils from London boroughs. The admissions criteria of the schools will enable them to accommodate local children before out of area children as local demand grows. Underlying data will be monitored closely to ensure local children can access a school place.

2. Epping / Waltham Abbey

Current PAN: 360
Current Capacity: 1920

Year 7 Place Forecast

Year	19/20	20/21	21/22	22/23	23/24	24/25	25/26	26/27	27/28	28/29
+/-	37	18	8	-24	-60	-80	-53	-122	-112	-174
Epping St John's CE, King Harold										

Capacity Forecast

Year	+/-
19/20	302
20/21	259
21/22	201
22/23	87
23/24	-68

Projects Pipeline

School	Year	Description	Places
tbc	22/23	2 form entry expansion	60/300
New Secondary School	26/27	6 forms of entry, able to expand	180/900

A site for a new secondary school is included in the emerging Local Plan.

3. Ongar

Current PAN: 120
Current Capacity: 800

Year 7 Place Forecast

Year	19/20	20/21	21/22	22/23	23/24	24/25	25/26	26/27	27/28	28/29
+/-	0	0	0	0	0	0	0	0	0	0
The Ongar Academy										

Capacity Forecast

Year	+/-
19/20	176
20/21	182
21/22	188
22/23	194
23/24	200

Projects Pipeline

School	Year	Description	Places
no projects in pipeline			

3.4.2 Harlow

Primary School Planning Groups

1. Harlow East

Current PAN: 330

Current Capacity: 2370

Reception Place Forecast

Year	19/20	20/21	21/22	22/23	23/24	24/25	25/26	26/27	27/28	28/29
+/-	-14	-23	-33	-42	-54	-61	-67	-73	-77	-81
Church Langley Primary, Churchgate CE Primary, Fawbert and Barnard Primary, Harlowbury Primary, Henry Moore Primary, Newhall Primary, Potter Street Primary										

Capacity Forecast

Year	+/-
19/20	217
20/21	75
21/22	-48
22/23	-163
23/24	-276

Projects Pipeline

School	Year	Description	Places
New Primary School	21/22	2 form entry	60/420

A site for a new primary school has been secured through a S106 agreement on the Gilden Way development. For 20/21 a bulge class may be implemented to ensure every child has access to a local school place.

2a. Harlow South West

Current PAN: 627

Current Capacity: 4278

Reception Place Forecast

Year	19/20	20/21	21/22	22/23	23/24	24/25	25/26	26/27	27/28	28/29
+/-	30	54	68	43	33	32	30	29	28	28
Abbotsweld Primary, Holy Cross Catholic Primary, Jerounds Primary, Katherines Primary, Kingsmoor Primary, Latton Green Primary, Longwood Primary, Milwards Primary, Pear Tree Mead Primary, Purford Green Primary, St James CE Primary, St Luke's Catholic Primary, Water Lane Primary, William Martin CE Infant, William Martin CE Junior										

Capacity Forecast

Year	+/-
19/20	309
20/21	298
21/22	262
22/23	213
23/24	155

Projects Pipeline

School	Year	Description	Places
no projects in pipeline			

3a. Harlow North West

Current PAN: 400
Current Capacity: 2863

Reception Place Forecast

Year	19/20	20/21	21/22	22/23	23/24	24/25	25/26	26/27	27/28	28/29
+/-	-8	-13	-13	-23	-27	-31	-34	-37	-40	-43
Cooks Spinney Primary, The Downs Primary, Freshwaters Primary, St Alban's Catholic Primary, Tany's Dell Primary, Hare Street Primary, Little Parndon Primary, Pemberley Primary										

Capacity Forecast

Year	+/-
19/20	-53
20/21	-67
21/22	-83
22/23	-109
23/24	-129

Projects Pipeline

School	Year	Description	Places
Freshwaters Primary	20/21	½ form entry expansion	20/140

Secondary School Planning Groups

1. Harlow

Current PAN: 1072

Current Capacity: 2863

Year 7 Place Forecast

Year	19/20	20/21	21/22	22/23	23/24	24/25	25/26	26/27	27/28	28/29
+/-	-122	-109	-133	-179	-172	-261	-236	-232	-221	-211
Burnt Mill Academy, Mark Hall Academy, Passmores Academy, BMAT STEM, St Mark's Catholic, Stewards Academy										

Capacity Forecast

Year	+/-
19/20	463
20/21	239
21/22	-29
22/23	-350
23/24	-632

Projects Pipeline

School	Year	Description	Places
SFGC	19/20	4 forms of entry	120/240
SFGC	21/22	2 form entry expansion (moving into new accommodation)	60/660
SFGC	24/25	2 form entry expansion (fully utilising new accommodation)	60/300

Sir Frederick Gibberd College (SFGC) is a secondary free school approved by the DfE, due to open in September 2019. It will be opening in temporary accommodation on the site of Burnt Mill Academy, before moving to new accommodation by September 2021. The new accommodation will be large enough to accommodate an 8 form entry secondary school and a 6th form.

3.4.3 Uttlesford

Primary School Planning Groups

1. Sampfords / Thaxted / Wimbish

Current PAN: 106

Current Capacity: 749

Reception Place Forecast

Year	19/20	20/21	21/22	22/23	23/24	24/25	25/26	26/27	27/28	28/29
+/-	12	7	32	7	7	7	7	7	7	7
Debden CE Primary, Great Sampford Primary, Radwinter CE Primary, Thaxted Primary, Wimbish Primary										

Capacity Forecast

Year	+/-
19/20	59
20/21	48
21/22	65
22/23	68
23/24	70

Projects Pipeline

School	Year	Description	Places
no projects in pipeline			

2. Saffron Walden

Current PAN: 210

Current Capacity: 1490

Reception Place Forecast

Year	19/20	20/21	21/22	22/23	23/24	24/25	25/26	26/27	27/28	28/29
+/-	24	7	10	8	7	6	6	5	5	5
Katherine Semar Infant, Katherine Semar Junior, R A Butler Infant, R A Butler Junior, St Mary's CE Primary, St Thomas More Catholic Primary										

Capacity Forecast

Year	+/-
19/20	33
20/21	29
21/22	46
22/23	57
23/24	57

Projects Pipeline

School	Year	Description	Places
no projects in pipeline			

There is a significant level of new housing planned for Saffron Walden, which will likely lead to the requirement for a new primary school. A site for a new primary school has been secured through S106 agreements.

3. Stansted

Current PAN: 235
Current Capacity: 1678

Reception Place Forecast

Year	19/20	20/21	21/22	22/23	23/24	24/25	25/26	26/27	27/28	28/29
+/-	8	24	9	13	14	14	14	14	14	14
Bentfield Primary, Birchanger CE Primary, Elsenham CE Primary, Farnham CE Primary, Henham And Ugley Primary , Magna Carta Primary, Manuden Primary, St Mary's CE Primary										

Capacity Forecast

Year	+/-
19/20	273
20/21	234
21/22	194
22/23	173
23/24	153

Projects Pipeline

School	Year	Description	Places
no projects in pipeline			

4. Dunmow

Current PAN: 140
Current Capacity: 992

Reception Place Forecast

Year	19/20	20/21	21/22	22/23	23/24	24/25	25/26	26/27	27/28	28/29
+/-	-9	-20	1	-20	-29	-35	-42	-49	-54	-60
Dunmow St Mary's Primary, Great Dunmow Primary, Great Easton CE Primary										

Capacity Forecast

Year	+/-
19/20	-47
20/21	-90
21/22	-105
22/23	-144
23/24	-191

Projects Pipeline

School	Year	Description	Places
Dunmow St Mary's	19/20	Bulge Class	30/30
Dunmow St Mary's	20/21	Bulge Class	30/30
New Primary School	22/23	1 form entry, able to expand to 2 form entry	30/210

5. Hatfield / Roding / Sheering

Current PAN: 111
Current Capacity: 837

Reception Place Forecast

Year	19/20	20/21	21/22	22/23	23/24	24/25	25/26	26/27	27/28	28/29
+/-	0	10	10	6	2	-2	-6	-10	-14	-19
Hatfield Heath Primary, Little Hallingbury CE Primary, Rodings Primary, Sheering CE Primary, St Mary's CE Primary										

Capacity Forecast

Year	+/-
19/20	44
20/21	64
21/22	77
22/23	83
23/24	68

Projects Pipeline

School	Year	Description	Places
no projects in pipeline			

The forecast increasing demand for primary school places in this area is actually as a result of new housing planned east of Harlow (which falls in the PAA of Sheering CE Primary), which will be served by a new primary school as part of the enw housing development.

6. Clavering / Newport / Rickling

Current PAN: 75
Current Capacity: 513

Reception Place Forecast

Year	19/20	20/21	21/22	22/23	23/24	24/25	25/26	26/27	27/28	28/29
+/-	4	-9	13	-2	-2	-2	-2	-2	-2	-2
Clavering Primary, Newport Primary, Rickling CE Primary										

Capacity Forecast

Year	+/-
19/20	9
20/21	-21
21/22	-13
22/23	-19
23/24	-22

Projects Pipeline

School	Year	Description	Places
tbc	20/21	Bulge Class	15/15
Newport Primary	22/23	tbc	tbc

There is a significant amount of new housing planned, particularly in the Newport area. As housing plans are confirmed, forecasts will be adjusted.

7. Felsted

Current PAN: 95
Current Capacity: 693

Reception Place Forecast

Year	19/20	20/21	21/22	22/23	23/24	24/25	25/26	26/27	27/28	28/29
+/-	-5	-6	12	1	-1	-1	-1	-1	-1	-1
Felsted Primary, Flitch Green Primary, Stebbing Primary										

Capacity Forecast

Year	+/-
19/20	21
20/21	8
21/22	33
22/23	44
23/24	28

Projects Pipeline

School	Year	Description	Places
no projects in pipeline			

8. Takeley

Current PAN: 90
Current Capacity: 630

Reception Place Forecast

Year	19/20	20/21	21/22	22/23	23/24	24/25	25/26	26/27	27/28	28/29
+/-	7	-12	-6	-8	-8	-8	-8	-8	-8	-8
Roseacres Primary, Takeley Primary										

Capacity Forecast

Year	+/-
19/20	105
20/21	69
21/22	45
22/23	35
23/24	28

Projects Pipeline

School	Year	Description	Places
Rosecares Primary	20/21	Bulge Class	15/0

Accommodation has been provided at Rosecares Primary to accommodate two bulge classes, one in 18/19 and another in 20/21. Underlying population data is being closely monitored to assess if there is a need for permanent expansion in the medium to long term.

9. Not Grouped - Ashdon

Current PAN: 15
Current Capacity: 105

Reception Place Forecast

Year	19/20	20/21	21/22	22/23	23/24	24/25	25/26	26/27	27/28	28/29
+/-	5	1	4	4	5	5	5	5	5	5
Ashdon Primary										

Capacity Forecast

Year	+/-
19/20	22
20/21	24
21/22	26
22/23	26
23/24	28

Projects Pipeline

School	Year	Description	Places
no projects in pipeline			

10. Not Grouped - Chrishall

Current PAN: 15
Current Capacity: 105

Reception Place Forecast

Year	19/20	20/21	21/22	22/23	23/24	24/25	25/26	26/27	27/28	28/29
+/-	2	-12	-2	-4	-3	-3	-3	-3	-3	-3
Chrishall Holy Trinity & St Nicholas CE Primary										

Capacity Forecast

Year	+/-
19/20	-1
20/21	-16
21/22	-15
22/23	-14
23/24	-17

Projects Pipeline

School	Year	Description	Places
Chrishall	20/21	Bulge Class	15/15

11. Not Grouped – Great Chesterford

Current PAN: 30
Current Capacity: 210

Reception Place Forecast

Year	19/20	20/21	21/22	22/23	23/24	24/25	25/26	26/27	27/28	28/29
+/-	4	2	6	4	4	4	4	4	4	4
Great Chesterford CE Primary										

Capacity Forecast

Year	+/-
19/20	-4
20/21	-4
21/22	1
22/23	3
23/24	-

Projects Pipeline

School	Year	Description	Places
no projects in pipeline			

Secondary School Planning Groups

1. Dunmow

Current PAN: 270
Current Capacity: 1563

Year7 Place Forecast

Year	19/20	20/21	21/22	22/23	23/24	24/25	25/26	26/27	27/28	28/29
+/-	31	24	-5	1	11	-33	-37	-70	-66	-40
Helena Romanes School										

Capacity Forecast

Year	+/-
19/20	268
20/21	230
21/22	167
22/23	99
23/24	39

Projects Pipeline

School	Year	Description	Places
Helena Romanes School	24/25	2 form entry expansion	60/300

2. Stansted

Current PAN: 112
Current Capacity: 660

Year 7 Place Forecast

Year	19/20	20/21	21/22	22/23	23/24	24/25	25/26	26/27	27/28	28/29
+/-	2	-22	-17	-48	-44	-35	-49	-38	-38	-30
Forest Hall School										

Capacity Forecast

Year	+/-
19/20	83
20/21	57
21/22	37
22/23	-10
23/24	-50

Projects Pipeline

School	Year	Description	Places
Forest Hall School	20/21	bulge class	20/20
Forest Hall School	21/22	1 form entry expansion	30/150

3. Newport / Saffron Walden

Current PAN: 500
Current Capacity: 3002

Year 7 Place Forecast

Year	19/20	20/21	21/22	22/23	23/24	24/25	25/26	26/27	27/28	28/29
+/-	39	26	-49	-34	-9	-28	-61	32	-33	75
Joyce Frankland Academy, Saffron Walden County High										

Capacity Forecast

Year	+/-
19/20	-65
20/21	-73
21/22	-174
22/23	-242
23/24	-280

Projects Pipeline

School	Year	Description	Places
no projects in pipeline			

These schools admit a high number of pupils from out of area. Local demand will be monitored very closely to ensure there are sufficient spaces.